



HEAT

LIGHT



AIR

POWER





HEAT / LIGHT / AIR / POWER

At SA Equip we're experts in handling these four elemental forces. Our technologies allow you to control temperature, airflow and illumination – and to distribute power – safely and efficiently in dangerous, potentially explosive environments.



CONTENTS

- 02 **Company Overview**
- 10 **Product Specification Icon Key**
- 11 **Accreditations**
- 12 **ATEX Markings Explained**
- 14 **Examples of Hazardous Area Zones**
- 16 **Plugs, Sockets & Cables**

HEAT

- 18 **SA FLEXIHEAT**
- 20 **Heater**
- 22 **Pipe Heating Jacket**
- 24 **High Power Pipe Heating Jacket**
- 26 **HeatBox**

LIGHT

- 28 **SA LUMIN**
- 30 **LED Torch**
- 32 **LED Headtorch**
- 34 **LED Tasklight**
- 36 **LED Tasklight Kit**
- 38 **LED Worklight 100**
- 40 **LED Worklight 200**
- 42 **LED Emergency Worklight**
- 44 **LED Floodlight**
- 46 **LED Rechargeable Floodlight**
- 48 **LED Area Light**
- 50 **LED Tower Light**
- 52 **Vessel Entry Kits**

AIR

- 54 **SA CYCLONE**
- 58 **Air Mover**
- 60 **Filtration Unit**
- 62 **Negative Pressure Unit**
- 64 **Antistatic Duct System**
- 66 **Antistatic Layflat Ducting**
- 68 **Ducting Connector**
- 70 **Extraction Hood**
- 72 **Fuel Tank Adaptor Flange**
- 74 **Air Mover & Area Light Trolley**
- 76 **Manway Ducting Adaptor**
- 78 **Venturi Air Mover**

POWER

- 80 **SA POWERNET**
 - 82 **Mains Distribution Unit**
 - 84 **3.8KVA Transformer**
 - 86 **400VA Transformer**
 - 88 **Splitter Box**
 - 90 **Extension Reel**
 - 92 **Extension Lead**

 - 94 **Product Directory**
 - 105 **Notes**
 - 106 **Contact Us**
-



PERFORMANCE IN THE EXTREME

We've been in business since 1924, originally providing electrical supplies and support to the shipping industry. In the 1960s – when the great North Sea oil boom began – the EX industry was in its infancy, and few products had been specifically designed for use in hazardous environments. We responded to the new demand by developing safe, rugged, practical equipment for use on and offshore.

Our business grew with oil and gas, as we developed solutions in light, heat, ventilation and power distribution, achieving several 'world firsts' along the way. Over the years we've learned that what works for oil and gas also works in other potentially dangerous, cramped or inaccessible environments. SA Equip products are now used in shipping, aerospace, defence, utilities, pharmaceuticals, distilling, power stations and other heavy industry applications.



SAFETY & EFFICIENCY

SA Equip's 95+ years of experience and dedication to the industry empowers the company to design and manufacture safe and reliable ATEX & IECEx equipment which is used in multiple industries across the globe.

With our equipment, you can work in environments, conditions, temperatures and spaces where it would otherwise be impossible. You can achieve better results with less risk, and in fewer man-hours.

In partnership with regional distributors and certification bodies, our team is on hand to ensure you receive the highest quality of ATEX & IECEx equipment for your applications. We also provide bespoke project support, technical demonstrations and a wealth of industry experience.



INNOVATION

At SA Equip, we believe in staying at the forefront of our industry. We continually invest in developing more sustainable processes and innovative technology to increase the safety and efficiency of our portable ATEX, IECEx, UKEX and INMETRO solutions.

We are highly focused on adaptability, our new product development is centered around our customers and how we can design or modify our equipment to improve their operational performance.

PRODUCT REFERENCE GUIDES

PRODUCT SPECIFICATION ICON KEY



Gas Zone 0



Gas Zones 1 & 2



Dust Zone 20



Dust Zones 21 & 22



Battery Powered



Rechargeable Battery



LED



Voltage Rating



Voltage Rating



Voltage Rating



Voltage Rating



Voltage Rating



Voltage Rating


ACCREDITATIONS




ATEX MARKINGS EXPLAINED

TYPICAL EQUIPMENT LABEL





EX TRANSFORMER



PRODUCT CODE:

INPUT VOLTAGE: ITS21UKEX0003

OUTPUT VOLTAGE: ITS16ATEX38466

RATING: IECEX ITS 16.0034

MAX OUTPUT CURRENT: SERIAL NO:

CERTIFICATION: YEAR OF MANUF:

⊕ II 2 G D WEIGHT

Ex db eb IIC T4 Gb **WARNING**


Ex tb IIIC T135°C Db IP66 Do not open in hazardous area.


Ta -40°C to +40°C Do not open while energised.

+44 (0)333 240 6111

info@saequip.com
www.saequip.com

SA Equipment
10 Clifton View
East Mains Industrial Estate
Broxburn
EH52 5NE
United Kingdom





Please note: This information should not be used to zone areas or decide whether equipment is suitable. Specialist ATEX advice must always be taken before making decisions. SA Equip LLP accept no liability for use of this information. E&OE.

| ATEX Equipment Category | |
|-------------------------|-------|
| Category | Zone |
| 1 | 0, 20 |
| 2 | 1, 21 |
| 3 | 2, 22 |

| | |
|---|------|
| G | Gas |
| D | Dust |

| Protection Method | |
|-------------------|-------------------------|
| d | Flameproof Enclosure |
| e | Increased Safety |
| ia/ib | Intrinsic Safety |
| m | Encapsulation |
| o | Oil Immersion |
| q | Power Filling |
| tb | Protection by Enclosure |

| Gas Group | Typical Hazard |
|-----------|--------------------|
| IIA | Propane |
| IIB | Ethylene |
| IIC | Hydrogen/Acetylene |
| II | All Gases |

| Dust Group | Typical Hazard |
|------------|---------------------|
| IIIA | Combustible Flyings |
| IIIB | Non-conductive Dust |
| IIIC | Conductive Dust |

| Temperature Class | Maximum Surface Temperature |
|-------------------|-----------------------------|
| T1 | 450°C |
| T2 | 300°C |
| T3 | 200°C |
| T4 | 135°C |
| T5 | 100°C |
| T6 | 85°C |

KEY

| ATEX Certificate Number | |
|-------------------------|--------------------------|
| Baseefa | Notified Body |
| 09 | Year of Certification |
| ATEX | ATEX Certified Equipment |
| 0226 | Certificate Number |

| UKEX Certificate Number | |
|-------------------------|-----------------------|
| ITS | Notified Body |
| 21 | Year of Certification |
| UKEX | UKCA Certified body |
| 0003 | Certificate Number |

| IECEX Certificate Number | |
|--------------------------|-----------------------|
| BAS | Notified Body |
| 13 | Year of Certification |
| 0094 | Certificate Number |

| | |
|---|--------------------------------|
|  | EU Explosive Atmosphere Symbol |
|---|--------------------------------|

| ATEX Equipment Group | |
|----------------------|--|
| Group II | Explosive Atmospheres (other than mines) |
| Group I | Mines susceptible to Firedamp |

| Temperature Class | Maximum Surface Temperature |
|-------------------|-----------------------------|
| T85 | 85°C |
| T95 | 95°C |
| T100 | 100°C |
| etc. | |

T_a Operating Temperature

This gives the range of ambient temperatures that the product is certified to be used in.

| Equipment Protection Level | | |
|----------------------------|---------|---------------------|
| Zone | Gas EPL | Protection Afforded |
| 0 | Ga | Very High |
| 1 | Gb | High |
| 2 | Gc | Enhanced |
| Dust EPL | | |
| 20 | Da | Very High |
| 21 | Db | High |
| 22 | Dc | Enhanced |

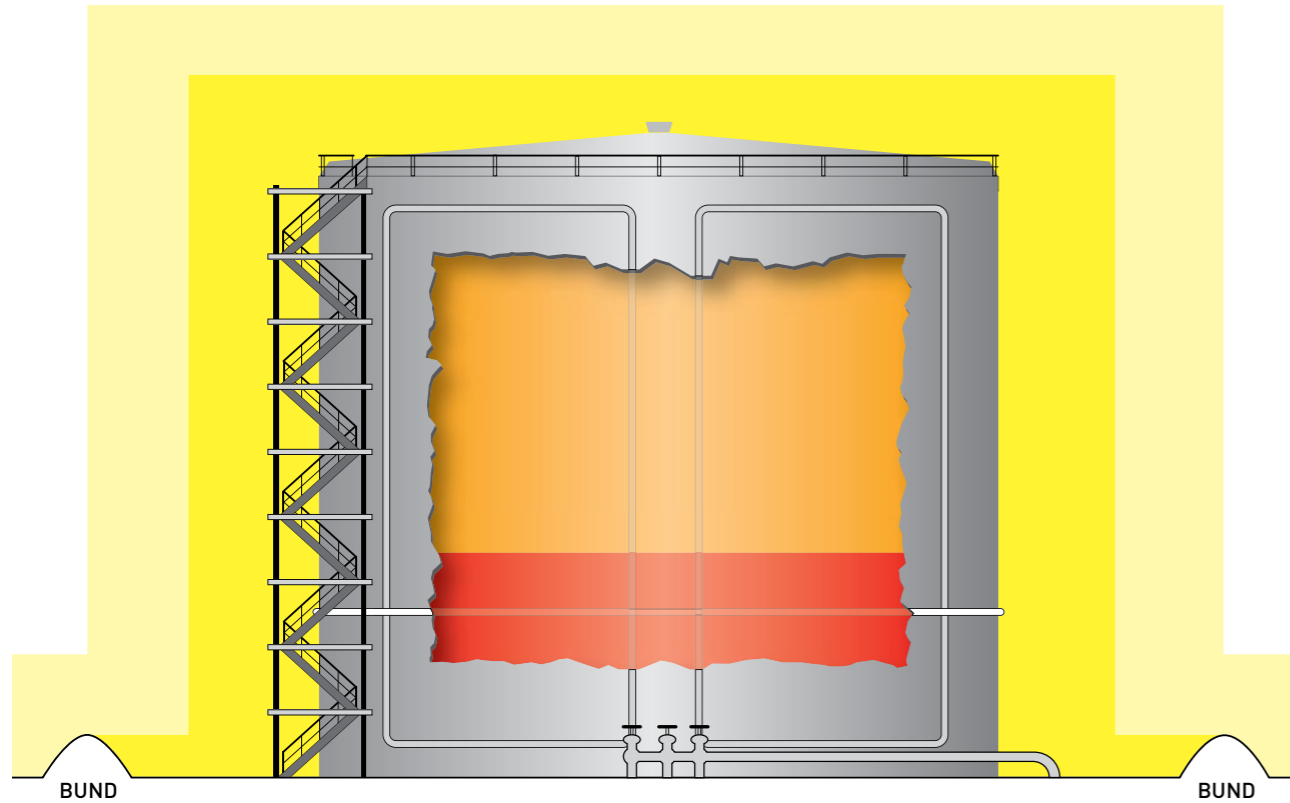
| Ingress Protection | | | |
|-----------------------|-------------------------------------|-----------------------|--------------------------|
| 1 st digit | Solids – protected from | 2 nd digit | Liquids – protected from |
| 0 | Not protected | 0 | Not protected |
| 1 | Objects bigger than 50mm diameter | 1 | Vertically falling drops |
| 2 | Objects bigger than 12.5mm diameter | 2 | Drops hitting at 15° |
| 3 | Objects bigger than 2.5mm diameter | 3 | Spray |
| 4 | Objects bigger than 1mm diameter | 4 | Splashing |
| 5 | Dust | 5 | Jets |
| 6 | Sealed against dust | 6 | Powerful jets |
| | | 7 | Immersion |
| | | 8 | Continuous immersion |

EXAMPLES OF HAZARDOUS AREA ZONES



- FLAMMABLE MATERIAL**
- in liquid form
 - Zone 0
 - Zone 1
 - Zone 2

COMMERCIAL BULK STORAGE TANK

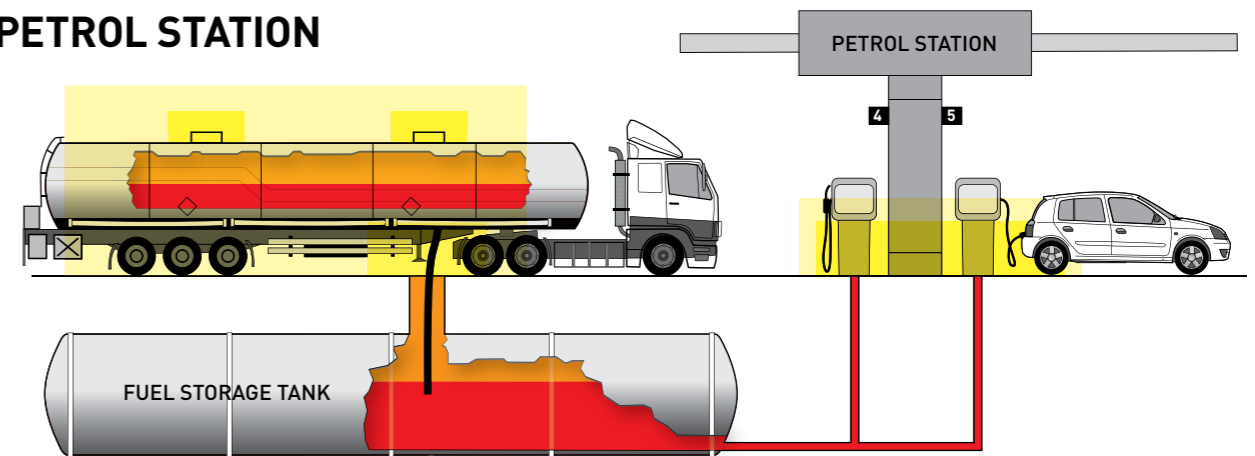


ZONES & EQUIPMENT CATEGORIES

| Zones | Broad Definitions of Zones (for guidance only) | ATEX Equipment Category | Equipment Integrity Requirements |
|-------------------------------------|--|-------------------------|--|
| 0 Gases/Vapours: 20 Dusts: 20 | Explosive atmospheres are present continuously, for long periods or frequently | 1 | Equipment must be safe under normal operation, expected and rare malfunction |
| 1 Gases/Vapours: 21 Dusts: 21 | Explosive atmospheres are likely to occur occasionally under normal operation | 2 | Equipment must be safe under normal operation, expected malfunction |
| 2 Gases/Vapours: 22 Dusts: 22 | Explosive atmospheres may occur under abnormal operation and persist for a short period only | 3 | Equipment must be safe under normal operation |

The higher the probability of an explosive atmosphere occurring and persisting, the higher the integrity requirements of the equipment to be installed.

PETROL STATION



Please note: This information should not be used to zone areas or decide whether equipment is suitable. Specialist ATEX advice must always be taken before making decisions. SA Equip LLP accept no liability for use of this information. E&OE.

PLUGS, SOCKETS & CABLES



PLUGS /

CEAG



24V (purple)



110V (yellow)



42V (white)



230V (blue)

ATX



24V (purple)



110V (yellow)



42V (white)



230V (blue)

STAHL



110V (yellow)



230V (blue)

SOCKETS & COUPLERS /

CEAG



24V (purple)



110V (yellow)



42V (white)



230V (blue)

ATX



24V (purple)



110V (yellow)



42V (white)



230V (blue)

STAHL



110V (yellow)



230V (blue)

CABLES /

HOFR Braided Cable

A braided cable with wire braiding that is heat and oil resistant and flame retardant.

SPECIFICATION:

- Conductor: Tinned Annealed Flexible Copper
- Insulation: Ethylene Propylene Rubber (EPR)
- Armouring: Wire Braid
- Sheath: Elastomer compound type sw4
- Voltage: 600/1000V



HO7RN-F Cable

A heavy duty rubber cable that is oil resistant and flame retardant.

SPECIFICATION:

- Conductor: Plain Annealed Flexible Copper
- Insulation: Ethylene Propylene Rubber (EPR)
- Sheath: Heavy Duty Polychloroprene (PCP) in black
- Voltage: 450/750V



SY Braided Cable

A braided cable with steel wire braiding providing mechanical protection.

SPECIFICATION:

- Conductor: Plain Annealed Flexible Copper
- Insulation: PVC
- Armouring: Galvanised Steel Wire Braid
- Sheath: Transparent PVC
- Voltage: 300/500V



PUR Cable

A particularly durable cable under harsh conditions that is oil resistant and flame retardant.

SPECIFICATION:

- Conductor: Tinned Copper
- Insulation: Ethylene Propylene Rubber (EPR)
- Sheath: Polyurethane (PUR) type TPU in yellow
- Voltage: 450/750V



OTHER PLUG OPTIONS INCLUDING MARECHAL ARE ALSO AVAILABLE

OTHER CABLE OPTIONS ARE ALSO AVAILABLE

HEAT

LIGHT

AIR

POWER

SA FLEXIHEAT®



Heater 20



Heating Jackets 22



High Power Heating Jackets 24



HeatBox 26

"I have used SA for lighting and have always found it to be the best. When I discovered that the FLEXIHEAT Heater was made by SA, I knew it would be truly excellent. As expected, it did the job quickly and saved the company thousands of pounds. We now set you as a benchmark for how products should be."

Electrical Engineer, North Sea platform

HEATER

SAPH18440

WHERE POWERFUL PERFORMANCE MATTERS

THE SA FLEXIHEAT EX HEATER withstands the harshest conditions offering robust, reliable and powerful performance. Fully certified for use in hazardous zones classified as 1 or 2, the heater comes as 'Plug & Play' enabling efficient implementation and use of the system. Hosting optimised heating element design and a solid state electronic control system, our 440V Heater allows you to meet temperature requirements effectively and maintain optimum working conditions in temperatures as low as -40°C.



BENEFITS

- EX Certified for Zones 1 & 2 (gas)
- 400-440VAC (+/-10%)
- Compact, portable and lightweight
- Operational in temperatures as low as -40°C
- IP65 Rated
- 18kW Output at 440V
- Produces Airflow of 2560m³/hr
- Solid state electronic control system
- Marine grade materials
- Multiple lifting handles
- Optimised heating element design
- Can be used with or without ducting

CORE PRODUCT INFORMATION

SA FLEXIHEAT EX Heater 18kW 400V-440V (+/-10%)
 3Ph 50/60 Hz c/w 4p 32A CEAG Plug and 20m of braided cable
 Order Code: SAPH18440/20HR/CEA32/4P

CEAG 5P & STAHL 5P plugs and different cable lengths also available - please contact SA Equip for more details.

SA FLEXIHEAT EX Heater Trolley
 Order Code: SAPH/WD



SPECIFICATIONS

- CERTIFICATION**
 Ex II 2 G c IIB T3
 Ex db e mb IIB T3 Gb
- OPERATING TEMPERATURE**
 -40°C to +40°C
- INGRESS PROTECTION**
 IP65
- DIMENSIONS**
 760mm x 560mm x 560mm (L x w x h)
- WEIGHT**
 55kg exc. cable
- CURRENT DRAW @ 440VAC**
 Start Up: 32A
 Run: 26A
- FREE AIRFLOW**
 2130m³/h (1253cfm) @ 50Hz
 2560m³/h (1506cfm) @ 60Hz
- DUCTING SIZE**
 300mm diameter
- 3 PHASE SUPPLY**
 3Ph+E or 3Ph+N+E
- AIR SPEED**
 15.5m/s (51ft/s) @ 50Hz
 16.3m/s (54ft/s) @ 60Hz
- TYPICAL TEMPERATURE RISE**
 Approx. 20°C above ambient
- NOISE LEVEL @ 1M**
 83dbA
- CABLE LENGTH**
 20m (or as required)
- PATENT PROTECTED GB2524076

You may also need...
 Antistatic Duct System 64
 Pipe Heating Jackets 22
 Plug, Socket, and Cable guide 16
 Product Directory 94 - 104



HEATING JACKETS

SAFH150 / SAFH050



INSTALLED IN SECONDS, ANYWHERE YOU NEED THEM

SA FLEXIHEAT EX Heating Jackets simply and quickly wrap around pipes wherever low temperatures cause the contents to wax and solidify and can be installed by one worker within seconds. With three different sizes and linkable sections, they work with valves, instruments and straight and curved pipework. Effective in temperatures as low as -40°C, they keep compressors and pumps running to enable you to get on with those important maintenance jobs.



BENEFITS

- EX Certified for Zones 1 and 2 (gas), 21 and 22 (dust)
- Operational in temperatures as low as -40°C
- Tough and durable
- Highly portable and lightweight
- Rapid and easy to install
- Different size options – 400mm, 700mm, & 1000mm (narrow)
- Available in 110V & 230V versions
- Self-regulating heat output
- Options allow for virtually any sized pipe
- Suitable for straight or curved pipework
- Linkable

CORE PRODUCT INFORMATION

SA FLEXIHEAT EX 400mm Long Heating Jacket
 110VAC, Linkable 80W 0.96A for use with pipes up to 150mm dia.
 c/w CEAG plug & coupler and braided cable **Order Code: SAFH150P/400C110CEA**
 230VAC Linkable 80W 0.46A for use with pipes up to 150mm dia.
 c/w CEAG plug & coupler and braided cable **Order Code: SAFH150P/400C230CEA**



SA FLEXIHEAT EX 700mm Long Heating Jacket
 110VAC Linkable 104W 1.25A for use with pipes up to 150mm dia.
 c/w CEAG plug & coupler and braided cable **Order Code: SAFH150P/700C110CEA**
 230VAC Linkable 104W 0.60A for use with pipes up to 150mm dia.
 c/w CEAG plug & coupler and braided cable **Order Code: SAFH150P/700C230CEA**



SA FLEXIHEAT EX 1000mm Long Heating Jacket
 110VAC Linkable 72W 0.87A for use with pipes up to 50mm dia.
 c/w CEAG plug & coupler and braided cable **Order Code: SAFH050P/1000C110CEA**
 230VAC Linkable 72W 0.40A for use with pipes up to 50mm dia.
 c/w CEAG plug & coupler and braided cable **Order Code: SAFH050P/1000C230CEA**



ATX & STAHL connectors and different cable lengths also available – please contact SA Equip for more details.

SPECIFICATIONS

CERTIFICATION
 Ex II 2 GD
 Ex eb IIC T5 Gb
 Ex tb IIIC T95°C Db IP65

OPERATING TEMPERATURE
 -40°C to +65°C

SELF REGULATING TEMPERATURE
 65°C

VOLTAGE OPTIONS
 110VAC, 230VAC

JACKET MATERIAL
 Rubber coated glass cloth
 Anti-static and Non-flammable

HEATING CABLE MATERIAL
 Fluoropolymer

INGRESS PROTECTION
 IP65

POWER (WATTS)
 See product descriptions.
 Measurements taken at 10°C

CURRENT DRAW (AMPS)
 See product descriptions.
 Measurements taken at -15°C

JACKET SIZES
 SAFH150P/400C
 400mm long x 600mm wide
 Maximum pipe dia. 150mm

SAFH150P/700C
 700mm long x 600mm wide
 Maximum pipe dia. 150mm

SAFH050P/1000C
 1000mm long x 300mm wide
 Maximum pipe dia. 50mm

WEIGHT
 2.2kg (SAFH150P/400C)
 3.5kg (SAFH150P/700C)
 3.0kg (SAFH050P/1000C)

FIXING METHOD
 Adjustable tensioning belts with snap-lock buckles

You may also need...
 Heaters 20
 Extension Leads 90 & 92
 Transformers 84 & 86
 Splitter Box 88
 Plug, Socket, and Cable guide 16
 Product Directory 94 - 104



HIGH POWER HEATING JACKETS

SAFH150H / SAFH050H

EXTREMELY FLEXIBLE, MODULAR HEATING SYSTEM

Our ATEX certified high-power pipe heating jackets provide safe and reliable temporary frost protection and maintenance of process equipment. The flexibility of the jackets allows them to be installed quickly and easily which significantly reduces maintenance and installation costs. The jackets include both input and output cables allowing jackets to be connected to insulate larger areas.



BENEFITS

- EX Certified for Zones 1 and 2 (gas), 21 and 22 (dust)
- Operational in temperatures as low as -50°C
- Tough and durable
- Highly portable and lightweight
- Rapid and easy to install
- Different size options – 400mm, 700mm, & 1000mm (narrow)
- Available in 230V
- Self-regulating heat output
- Options allow for virtually any sized pipe
- Suitable for straight or curved pipework
- Linkable

CORE PRODUCT INFORMATION

SA FLEXIHEAT EX 400mm Long Heating Jacket
230VAC Linkable 193W 2.43A for use with pipes up to 150mm dia.
c/w CEAG plug & coupler and braided cable
Order Code: SAFH150H/400C230CEA



SA FLEXIHEAT EX 700mm Long Heating Jacket
230VAC Linkable 285W 3.60A for use with pipes up to 150mm dia.
c/w CEAG plug & coupler and braided cable
Order Code: SAFH150H/700C230CEA



SA FLEXIHEAT EX 1000mm Long Heating Jacket
230VAC Linkable 175W 2.20A for use with pipes up to 50mm dia.
c/w CEAG plug & coupler and braided cable
Order Code: SAFH050H/1000C230CEA



ATX & STAHL connectors and different cable lengths also available – please contact SA Equip for more details.

SPECIFICATIONS

CERTIFICATION

Ex II 2 GD
Ex eb IIC T3 Gb
EX tb IIIC T195°C Db IP65

OPERATING TEMPERATURE

-50°C to +120°C

SELF REGULATING TEMPERATURE

120°C

VOLTAGE OPTIONS

230VAC

JACKET MATERIAL

Rubber coated glass cloth
Anti-static and Non-flammable

HEATING CABLE MATERIAL

Fluoropolymer

INGRESS PROTECTION

IP65

POWER (WATTS)

See product descriptions.
Measurements taken at 10°C

CURRENT DRAW (AMPS)

See product descriptions.
Measurements taken at -15°C

JACKET SIZES

SAFH150H/400C
400mm long x 600mm wide
Maximum pipe dia. 150mm

SAFH150H/700C
700mm long x 600mm wide
Maximum pipe dia. 150mm

SAFH050H/1000C
1000mm long x 300mm wide
Maximum pipe dia. 50mm

WEIGHT

2.2kg (SAFH150P/400C)
3.5kg (SAFH150P/700C)
3.0kg (SAFH050P/1000C)

FIXING METHOD

Adjustable tensioning belts with snap-lock buckles

You may also need...

Heaters 20
Extension Leads 90 & 92
Transformers 84 & 86
Splitter Box 88
Plug, Socket, and Cable guide 16
Product Directory 94 - 104

HEATBOX

SAHB



PAINT & FLUID TEMPERATURES MAINTAINED

The SA FLEXIHEAT EX HeatBox stores containers of paint, PFP, grease and other substances at their optimum temperature right next to your application, even in a Zone 1 Hazardous area. This has been proven to deliver **extensive financial savings** as it reduces the time spent carrying products from heated stores to the work site. The HeatBox is air powered, exceptionally simple to use and virtually maintenance free.



BENEFITS

- EX Certified for Zones 1 & 2 (gas)
- Saves you time, risk, and money on tasks
- Compressed air powered – no electricity required
- Portable and lightweight
- Easy product application
- Takes standard 20 Ltr containers
- Higher quality application
- Temperature indicator
- Safe and simple temperature regulation
- Fast and safe heating to over 40°C

SPECIFICATIONS

- CERTIFICATION**
 EX II 2 G c T4
- MAXIMUM CONTAINER DIAMETER**
 280mm
- DIMENSIONS**
 860mm x 400mm x 400mm
- RECOMMENDED WORKING PRESSURE**
 5 bar
- MIN/MAX PRESSURE**
 4 bar minimum, 8 bar maximum
- AIR CONSUMPTION**
 280l/min @ 4 bar
- WARRANTY**
 2 years
- WEIGHT**
 17.4kg

CORE PRODUCT INFORMATION

SA FLEXIHEAT EX HeatBox
 Order Code: SAHB/2-AP



Please contact SA Equip should you require further details.



HEAT LIGHT AIR POWER



LED Torch 30



LED Head Torch 32



LED Tasklight 34



LED Tasklight Kit 36



LED Worklight
100 38



LED Worklight
200 40



LED Emergency
Worklight 42



LED Standard
Floodlight 44



LED Rechargeable
Floodlight 46



LED Area Light 48



LED Tower Light 50



Vessel Entry Kit 52



LED TORCH

EX150



HANDY, POWERFUL, EXTREMELY TOUGH

Weighing just 145g, the SA LUMIN EX LED Torch packs the power of a much larger handlamp into a compact, robust unit. It throws out an impressive 135 lumens where you need it, and an Intelligent Light Sensor adjusts the beam, extending battery life to save you time and money. Running up to 30 hours on one set of four standard AAA batteries, it also features a glo cap so it's easy to find in the dark.



BENEFITS

- EX Certified for Zones 0, 1 and 2 (gas), 20, 21 and 22 (dust)
- Penetrating light beam
- Waterproof and dustproof
- Ergonomic design
- Optimum light output to size ratio
- Intelligent Light Sensor
- Up to 30 hours battery life
- Uses standard AAA batteries
- Glo cap

SPECIFICATIONS

CERTIFICATION

II 1G Ex ia IIC T4 Ga
II 1D Ex ia IIC T85°C Da

INGRESS PROTECTION

IP67

OPERATING TEMPERATURE

-20°C to +40°C

MATERIALS

Impact resistant thermoplastic resin

POWER SAVING MODE

Light sensor adjusts light power to suit the ambient light

BATTERIES

4 x AAA/R03 6V

BATTERY DURATION

High Power – 4 hours
Medium Power – 8 hours
Low Power – 30 hours

LIGHT OUTPUT

135 lumens

LIGHT SOURCE

High Power LED

DIMENSIONS

150mm x 38mm x 44mm

WEIGHT

145g

ACCESSORIES INCLUDED

Wrist Strap

CORE PRODUCT INFORMATION

SA LUMIN EX LED Torch

c/w light sensor, wrist strap, and 4 x AAA/R03 6V batteries

Order Code: EX150



EX150 Copyright © 2023 SA Equip LLP. All rights reserved. E&OE V6



LIGHT

You may also need...
Lighting Kits 36
Product Directory 94 - 104

LED HEADTORCH

EX600



RUGGED CONSISTENCY FOR THE EXTREME

The EX600 LED Headtorch is designed to be tough, compact and comfortable. The light-weight and ergonomic design of our headtorch delivers high quality light output for maintenance and inspection jobs, rope access and confined space entry. With two light output settings and simple push button operation, users can easily select the required lumen output based on their applications. It operates at a high level of brightness with a 200 lumen light output combined with a long run-time.



BENEFITS

- EX Certified for Zones 0, 1 and 2 (Gas)
- Simple push button operation
- Tough, anti-static casing
- Adjustable anti-static head strap
- Battery compartment locking mechanism
- 50,000hrs LED life
- IP67 protected
- Powered by 3 x AAA batteries
- T4 temperature class
- Swivel head

CORE PRODUCT INFORMATION

SA LUMIN EX LED Headtorch
c/w head strap, helmet clips and 3 x AAA batteries
Order Code: EX600



SPECIFICATIONS

CERTIFICATION

⊕ I M 1 Ex ia I Ma
⊕ II 1 G Ex ia IIC T4 Ga

INGRESS PROTECTION

IP67

OPERATING TEMPERATURE

-20°C to +40°C

MATERIALS

Impact resistant construction

BATTERIES

3 x AAA

BATTERY DURATION

Standard Mode – 12 Hours
Boost Mode – 6 Hours

LIGHT OUTPUT

Up to 200 lumens

LIGHT SOURCE

High Power LED

DIMENSIONS

80mm x 50mm x 45mm

WEIGHT

180g (Including Batteries)



LIGHT

You may also need...
Product Directory 94 - 104

LED TASKLIGHT

SATL100/SG

CLEAR, EVEN LIGHT PRECISELY WHERE YOU NEED IT

With a bank of 30 high-power LEDs, the SA LUMIN EX LED Tasklight gives you clear, even light output so you can see and work efficiently. It's ideal for quick inspections, emergency response work, rope access work and tasks in remote or inaccessible areas. As it's rechargeable there are no trailing cables to trip over, and a fast recharge time of 1-3 hours gives up to 6 hours use. The versatile, ergonomic design means you can hang it, stand it up, lie it down or hold it exactly where you need it.



BENEFITS

- EX Certified for Zones 0, 1 and 2 (gas), 20, 21 and 22 (dust)
- High Power LED Light Output
- Rechargeable – no trailing cables
- Up to 15 hours use per charge
- Waterproof and dustproof (IP65)
- Lightweight & highly ergonomic
- Tough and durable
- Retractable hook
- Built-in magnet, belt clip and sturdy hook

SPECIFICATIONS

CERTIFICATION
 ⚡ II 1G Ex ia IIC T4 Ga
 ⚡ II 1D Ex ia IIC T100°C Da

CHARGING TIME
 Full charge – 12 hours

OPERATING TEMPERATURE
 -20°C to +45°C

INGRESS PROTECTION
 IP65

BATTERY
 Lithium-Ion

LIGHT OUTPUT
 Illuminance, Max (Lux@0,5m) 500
 Illuminance, Min (Lux@0,5m) 250

WEIGHT
 0.44kg

DIMENSIONS
 220mm x 70mm x 39mm
 (SATL100/SG only)

CHARGER SUPPLY VOLTAGE
 Charging input voltage (V) 100-240V AC / 50-60Hz
 Charging current (A) 2.00
 Charging voltage DC (V) 5.00

CORE PRODUCT INFORMATION

SATL100/SG SA LUMIN ATEX LED
 Tasklight c/w charger offering 15 hours continuous use c/w charger, mains supply lead
Order Code: SATL100/SG



SA LUMIN Tasklight Magnetic Bracket
 c/w anti-static strap and stainless steel spring-loaded buckle
Order Code: SATL/MB



SA LUMIN ATEX LED Tasklight Set
 c/w 5way charging rack 5-Way Charging Rack & Mains Supply Lead
Order Code: SATL100/SG/CR5

SA LUMIN Tasklight Stabilising Base Unit
Order Code: SATL/BU



SA LUMIN Tasklight Holster
 enabling hands-free operation of the Tasklight c/w adjustable strap
Order Code: SATL/HR



SA LUMIN Tasklight Adjustable Floor Stand
Order Code: SATL/FS4



You may also need...
 Tasklight Kits 36
 LED Floodlights 44
 Product Directory 94 - 104

LED TASKLIGHT KIT

SATL100/KIT1 / SATL100/KIT2



EVERYTHING YOU NEED TO PUT YOUR TASKLIGHT TO WORK

The SA LUMIN EX LED Tasklight is available with a comprehensive kit of accessories, and ready to use in any eventuality. Along with the Tasklight itself, the kit includes a holster, magnetic bracket, base unit, and a handy additional EX150 Torch together with a charger and charging leads.



BENEFITS

- Ideal for quick inspections and small tasks
- Leather holster
 - Hands free operation
 - Suitable for rope access work
 - Durable, anti-static leather construction
 - Conductive strap fits across body
 - Extra slots for belt fastening
 - Allows on/off operation of Tasklight while in holster
- Magnetic bracket
 - Enables Tasklight to be used as a worklight
 - Stainless steel magnet and mount, encased in anti-static rubber
 - Spring-loaded buckle-strap for easy attachment
 - Sticks to any magnetic metal surface at any angle
- Base unit
 - Anti-static rubber unit stabilises Tasklight when standing on end
 - Hole in base to facilitate attaching to a stand if necessary

CORE PRODUCT INFORMATION

SA LUMIN EX LED Tasklight Kit 1 c/w:
 1 x SA LUMIN EX LED Tasklight,
 1 x Leather Holster,
 1 x Magnetic Bracket,
 1 x Base Unit,
 1 x Charger,
 1 x Charging Lead 200-250VAC,
 1 x Vehicle Charging Lead 12-14VDC,
 1 x SA LUMIN EX LED Torch
Order Code: SATL100/SG/KIT1



SA LUMIN EX LED Tasklight Kit 2 c/w:
 1 x SA LUMIN EX LED Tasklight,
 1 x Leather Holster,
 1 x Magnetic Bracket,
 1 x Charger,
 1 x Charging Lead 200-250VAC,
 1 x Vehicle Charging Lead 12-14VDC
Order Code: SATL100/SG/KIT2



SPECIFICATIONS

CASE DIMENSIONS
 460mm x 325mm x 120mm

WEIGHT
 4.0kg (SATL100/KIT1)
 3.8kg (SATL100/KIT2)

CONTENTS
KIT1
 1 x SA LUMIN EX LED Tasklight
 1 x Leather Holster
 1 x Magnetic Bracket
 1 x Base Unit
 1 x Charger
 1 x Charging Lead 200-250VAC
 1 x Vehicle Charging Lead 12-14VDC
 1 x SA LUMIN EX LED Torch

KIT2
 1 x SA LUMIN EX LED Tasklight
 1 x Leather Holster
 1 x Magnetic Bracket
 1 x Charger
 1 x Charging Lead 200-250VAC
 1 x Vehicle Charging Lead 12-14VDC



LIGHT

You may also need...
Tasklight only 34
Torch only 30
Holster only 35
Magnetic Bracket only 35
LED Floodlights 44
Product Directory 94 - 104

LED WORKLIGHT 100

SA100



EYE-FRIENDLY LIGHT, ANYWHERE YOU NEED IT

Zone 1 & 2 certified SA LUMIN EX LED Worklights are designed with you, the user, in mind. Advanced LED technology is combined with exceptionally low cost of ownership to provide complete peace of mind.

Exceptional cable gland and socket protection further improves the reliability of this product. The SA LUMIN LED Worklight 100 is our compact version and is available in linkable and standard formats. It consumes less than 29 watts of power (at 110V) yet pumps out 2850 lumens of light.



BENEFITS

- EX Certified for Zones 1 and 2 (gas), 21 and 22 (dust)
- INMETRO Certified
- High Power LED technology
- Light output 2850 lumens (180°)
- Lightweight and compact
- Low cost of ownership
- Linkable versions available
- Advanced diffuser system
- Enhanced cable gland & socket protection
- Tough and durable
- High light output
- Exceptionally reliable
- Waterproof and dustproof
- T4 Temperature rating
- Supplied with Adjustable Hanging Straps and Protective Film
- Vessel Entry Kit available

SPECIFICATIONS

CERTIFICATION

Ex II 2 GD
Ex eb mb IIC T4 Gb
Ex tb IIIC T80°C Db

INGRESS PROTECTION

IP66

VOLTAGE OPTIONS

12VAC/DC, 24VAC/DC, 42VAC/DC, 110VAC/DC, 230VAC/DC

PLUG/SOCKET OPTIONS

ATX, CEAG & STAHL

OPERATING TEMPERATURE

-20°C to +55°C

LED LIFE

Approx. 50,000 hours

LIGHT OUTPUT

2850 lumens (180°)

LIGHT SOURCE

High Power LED Module

CABLE LENGTH

5m (Linkable)
10m (Non-Linkable)
20m (Non-Linkable 24V)
(or as required)

DIMENSIONS

675mm x 175mmØ

WEIGHT

1.8kg

CORE PRODUCT INFORMATION

SA LUMIN EX LED Worklight 100, 24W
24VAC/DC, c/w ATX plug and braided cable
Order Code: SA100A24ATX

42VAC/DC, c/w CEAG
plug and braided cable
Order Code: SA100A42CEA

110VAC Linkable, c/w CEAG
plug & socket and braided cable
Order Code: SA100C110CEA

230VAC Linkable, c/w CEAG
plug & socket and braided cable
Order Code: SA100C230CEA

SA LUMIN Worklight Plain Bracket
Order Code: SAFB090

SA LUMIN Worklight Magnetic Bracket
Order Code: SAFB100

SA LUMIN Worklight Magnetic Swivel Bracket
Order Code: SAFB105

SA LUMIN Worklight Scaffold Bracket
Order Code: SAFB110

SA LUMIN Worklight Antistatic
Protective Film
Order Code: SASP113

SA LUMIN Worklight Antistatic
Protective Bag (pack of 50)
Order Code: SAPB100/50

SA LUMIN Worklight Tripod Stand
Order Code: SAFB150



All SA LUMIN Worklights are supplied with anti-static Protective Film and adjustable Hanging Straps. ATX and STAHL connectors and different cable lengths also available – please contact SA Equip for more details.

You may also need...
Transformers 84 & 86
Splitter Boxes 88
Plug, Socket, and Cable guide 16
Product Directory 94 - 104



LED WORKLIGHT 200

SA200

VIRTUALLY INDESTRUCTIBLE & EXCEPTIONALLY RELIABLE

The new generation Zone 1 & 2 certified SA LUMIN EX LED Worklights are designed with you, the user, in mind. **Advanced LED technology is combined with exceptionally low cost of ownership to provide complete peace of mind.** Exceptional cable gland and socket protection further improves the reliability of this product. The SA LUMIN LED Worklight 200 provides 360° of light output at 4000 lumens, yet only weighs 2.7kg.



BENEFITS

- EX Certified for Zones 1 & 2 (gas), 21 & 22 (dust)
- INMETRO Certified
- High Power LED technology
- Light output 4000 lumens (360°)
- Low cost of ownership
- Linkable versions available
- Advanced diffuser system
- Enhanced cable gland & socket protection
- Lightweight and compact
- Tough and durable
- High light output
- Exceptionally reliable
- Waterproof and dustproof
- T4 Temperature rating
- Supplied with Adjustable Hanging Straps and Protective Film
- Vessel Entry Kit available

SPECIFICATIONS

- CERTIFICATION**
 Ex II 2 GD
 Ex eb mb IIC T4 Gb
 Ex tb IIIC T80°C Db
- INGRESS PROTECTION**
 IP66
- VOLTAGE OPTIONS**
 12VAC/DC, 24VAC/DC, 42VAC/DC, 110VAC/DC, 230VAC/DC
- PLUG/SOCKET OPTIONS**
 ATX, CEAG & STAHL
- OPERATING TEMPERATURE**
 -20°C to +55°C
- LED LIFE**
 Approx. 50,000 hours
- LIGHT OUTPUT**
 7000 lumens (360°)
- LIGHT SOURCE**
 High Power LED Module
- CABLE LENGTH**
 5m (Linkable)
 10m (Non-Linkable)
 20m (Non-Linkable 24V)
 (or as required)
- DIMENSIONS**
 1064mm x 175mmØ
- WEIGHT**
 2.7kg

CORE PRODUCT INFORMATION

SA LUMIN EX LED Worklight 200, 48W
24VAC/DC c/w ATX plug and braided cable
Order Code: SA200A24ATX

42VAC/DC c/w CEAG plug and braided cable
Order Code: SA200A42CEA

110VAC Linkable, c/w CEAG plug & socket and braided cable
Order Code: SA200C110CEA

230VAC Linkable, c/w CEAG plug & socket and braided cable
Order Code: SA200C230CEA

SA LUMIN Worklight Plain Bracket
Order Code: SAFB090

SA LUMIN Worklight Magnetic Bracket
Order Code: SAFB100

SA LUMIN Worklight Magnetic Swivel Bracket
Order Code: SAFB105

SA LUMIN Worklight Scaffold Bracket
Order Code: SAFB110

SA LUMIN Worklight Antistatic Protective Film
Order Code: SASP114

SA LUMIN Worklight Antistatic Protective Bag (pack of 50)
Order Code: SAPB200/50

SA LUMIN Worklight Tripod Stand
Order Code: SAFB150



All SA LUMIN Worklights are supplied with anti-static Protective Film and adjustable Hanging Straps. ATX and STAHL connectors and different cable lengths also available – please contact SA Equip for more details.

You may also need...
Transformers 84 & 86
Splitter Boxes 88
Plug, Socket, and Cable guide 16
Product Directory 94 - 104



LIGHT

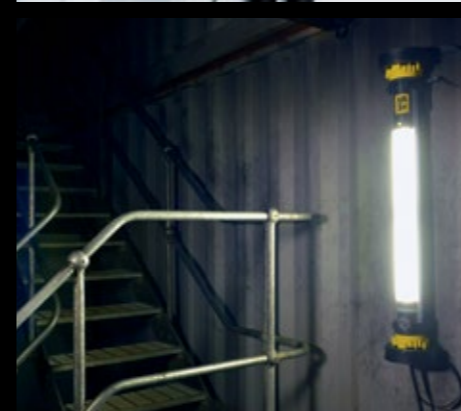
LED EMERGENCY WORKLIGHT

SAE100



OUR DURABLE WORKLIGHT, WITH ADDED LIFE-SAVING EMERGENCY BACKUP

The SA LUMIN EX LED Emergency Worklight combines a **robust, almost unbreakable design** with low maintenance providing a smooth, eye-friendly light output. It provides **emergency lighting for up to 90 minutes** following a power failure. In most emergencies that's enough to evacuate a work area, tank or confined space safely, and could mean the difference between life and death.



BENEFITS

- EX Certified for Zones 1 and 2 (gas), 21 and 22 (dust)
- INMETRO Certified
- T4 Temperature rating
- High Power LED technology
- Lightweight and compact
- Linkable in-line
- Tough and durable
- Exceptionally reliable
- Waterproof and dustproof
- Anti-static protective film system
- Emergency battery backup function
- Adjustable Hanging Straps

SPECIFICATIONS

CERTIFICATION

Ex II 2 GD
Ex eb mb IIC T4 Gb
Ex tb IIIC T80°C Db

INGRESS PROTECTION

IP66

VOLTAGE OPTIONS

110VAC/DC, 230VAC/DC

PLUG/SOCKET OPTIONS

ATX, CEAG & STAHL

OPERATING TEMPERATURE

-20°C to +55°C

LED LIFE

Approx. 50,000 hours

BATTERY BACKUP OPERATION

875 lumens for 90 minutes

BATTERY CHARGING TIME

11 hours approx.

LIGHT OUTPUT

2850 lumens (180°C)
4000 lumens (at source)

LIGHT SOURCE

High Power LED Module

WEIGHT

4kg

DIMENSIONS

1064mm x 175mmØ

CORE PRODUCT INFORMATION

SA LUMIN EX LED Emergency Worklight,
32W 110VAC Linkable c/w CEAG
plug & socket and 5m of braided cable
Order Code: SAE100C110CEA

Linkable c/w ATX
plug and 5m of braided cable
Order Code: SAE100C110ATX

SA LUMIN EX LED Emergency Worklight,
32W 230VAC Linkeable c/w CEAG
plug & socket and 5m of braided
Order Code: SAE100C230CEA

Linkeable c/w ATX plug & socket
and 5m of braided cable
Order Code: SAE100C230ATX

SA LUMIN Worklight Plain Bracket
Order Code: SAFB090

SA LUMIN Worklight Magnetic Bracket
Order Code: SAFB100

SA LUMIN Worklight Magnetic Swivel Bracket
Order Code: SAFB105

SA LUMIN Worklight Scaffold Bracket
Order Code: SAFB110

**SA LUMIN Worklight Antistatic
Protective Film**
Order Code: SASP114

**SA LUMIN Worklight Antistatic
Protective Bag (pack of 50)**
Order Code: SAPB200/50

SA LUMIN Worklight Tripod Stand
Order Code: SAFB150

All SA LUMIN Worklights are supplied complete with anti-static Protective Film and Hanging Straps. Different combinations including cable lengths, connectors and voltages also available – please contact SA Equip for more details.



LED FLOODLIGHT

SAFL300

STRONG, POWERFUL, WIDE SPREAD OF LIGHT

Compact and highly powerful, the SA LUMIN ATEX LED Floodlight will provide a strong 5000 lumen light output to your work area with a light coverage of 13m² at 5m. Operational in temperatures of -50°C to +55°C, you can successfully operate this light in many global locations. The unit is extremely maintenance friendly with built-in voltage drop protection and a 5 year warranty.



BENEFITS

- EX Certified for Zones 1 and 2 (gas), 21 and 22 (dust)
- INMETRO Certified
- Certified Portable
- High Power LED Light Beam
- 13m² light coverage at 5m
- 5-year warranty
- Maintenance friendly
- Operational temperature -50°C to +55°C
- Built-in voltage drop protection
- Waterproof and dustproof
- Toughened glass lens
- T4 Temperature rated
- Adjustable swivel head
- Linkable version available
- Anti-static protective lens system

SPECIFICATIONS

CERTIFICATION
 Ex II 2 GD
 EX e mb IIC T4 Gb
 Ex tb IIIIC T82°C Db

INGRESS PROTECTION
 IP66 & IP67

VOLTAGE OPTIONS
 12VAC/DC, 24VAC/DC, 42VAC/DC, 110VAC, 230VAC

PLUG/SOCKET OPTIONS
 ATX, CEAG & STAHL

OPERATING TEMPERATURE
 -20°C to +40°C (Linkable)
 -50°C to +55°C (Non-Linkable)

LIGHT OUTPUT
 5000 lumens

LIGHT COVERAGE
 At 5m distance, 100 lux or greater, over an area of 13m²

WARRANTY
 5 years

CABLE LENGTH
 10m (or as required)

DIMENSIONS
 430mm (w) x 260mm (d) x 390mm (h)
 (Non-Linkable version)

WEIGHT
 10.2kg (Non-Linkable version)
 11.6kg (Linkable version)

CORE PRODUCT INFORMATION

SA LUMIN EX LED Floodlight 68W
 24VAC c/w ATX plug and braided cable
Order Code: SAFL300A24ATX

42VAC c/w CEAG plug and braided cable
Order Code: SAFL300A42CEA

110VAC c/w CEAG plug and braided cable
Order Code: SAFL300A110CEA

230VAC c/w CEAG plug and braided cable
Order Code: SAFL300A230CEA

SA LUMIN EX LED Floodlight 68W
 110VAC Linkable c/w CEAG plug & socket and braided cable
Order Code: SAFL300C110CEA

230VAC Linkable, c/w CEAG plug & socket and braided cable
Order Code: SAFL300C230CEA

SA LUMIN Floodlight Scaffold Bracket
Order Code: SAFL/SB

SA LUMIN Floodlight Protective Shield
Order Code: SAFL/PS

SA LUMIN Floodlight Protective Film
Order Code: SAFL/PF

SA LUMIN Floodlight Tripod Stand
Order Code: SAFL/TS

SA LUMIN Floodlight Magnetic Brackets
Order Code: SAFL/MB

Different combinations of plugs and cable lengths also available – please contact SA Equip for more details.

SA POWERNET range
SA LUMIN Vessel Entry Kits

You may also need...
Plug, Socket, and Cable guide 16
Product Directory 94 - 104



LED RECHARGEABLE FLOODLIGHT

SARF300

STRONG AND VERSATILE DESIGN FOR DIVERSE APPLICATIONS

The powerful SA LUMIN LED Rechargeable Floodlight is lightweight and fully portable. Hosting an intense light output of up to 2000 lumens. Being fully certified for Zones 1 & 2 (Gas) and Zones 21 & 22 (Dust) it has been designed to make working in confined spaces even safer. Featuring no trailing cables vastly reduces trip hazards, while the powerful light output easily illuminates the working environment. Ergonomically designed for easy manoeuvrability, it is extremely user friendly.



BENEFITS

- EX Certified for Zones 1 & 2 (gas), 21 & 22 (dust)
- INMETRO Certified
- Lightweight and portable
- 12 Hour duration
- Light Output 1250/2000 lumens
- Unique protection system to cope with paint overspray
- Compatible accessory items available
- Maintenance friendly
- Low battery voltage warning
- Specialised charging system
- Waterproof and dustproof

SPECIFICATIONS

CERTIFICATION
 Ex II 2 GD
 Ex eb ib mb IIC T4 Gb
 Ex tb IIIC T85°C Db

INGRESS PROTECTION
 IP66

OPERATING TEMPERATURE
 -20°C/+43°C

BATTERY DURATION
 12 Hours (Normal)
 6 Hours (Boost)

LIGHT OUTPUT
 1250 (Standard)
 2000 (Boost)

CHARGE TIME
 6 Hours

DIMENSIONS
 430mm (w) x 260mm (d) x 390mm (h)

WEIGHT
 13.8kg

CORE PRODUCT INFORMATION

SA LUMIN EX LED Rechargeable Floodlight c/w Mains Charger
 Order Code: SARF300



SA LUMIN Floodlight Scaffold Bracket
 Order Code: SAFL/SB



SA LUMIN Floodlight Magnetic Bracket
 Order Code: SAFL/MB



SA LUMIN Floodlight Protective Shield
 Order Code: SAFL/PS



SA LUMIN Floodlight Protective Film
 Order Code: SAFL/PF



SA LUMIN Floodlight Tripod Stand
 Order Code: SAFL/TS



Protective Case for SA LUMIN EX LED Rechargeable Floodlight
 Order Code: SARF/PBX



You may also need...
 Product Directory 94 - 104



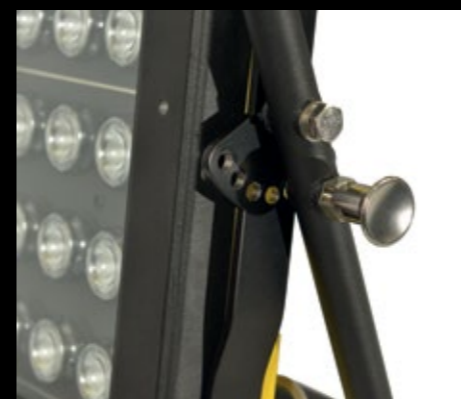
LED AREA LIGHT

SAAL25/FR



HIGH POWERED 25,000 LUMEN LED AREA FLOODLIGHT

With superior lumen output, robust construction and secure fixing systems, our SA LUMIN LED Area Light provides a light output of 25,000 lumens yet draws only 300 watts. Utilising high power LED technology to efficiently illuminate large work areas in hazardous environments. The extremely adjustable light head with secure positioning bolt enables multiple lighting angles to be achieved. It is built to be either floor standing or securely attached to scaffolding using the integrated scaffold clamp.



BENEFITS

- EX Certified for Zones 1 and 2 (Gas)
- Light output 25,000 lumens
- -50°C to +50°C Operating Temperature (Based on Plug Type)
- Easily adjustable light head with secure positioning bolt
- Colour temperature 6000K+
- Beam Angle: 30° x 30°
- IP66 protected
- Toughened glass lens
- Durable construction
- Easy to move and carry
- Floor standing or securely fixes to scaffolding
- 5 year product warranty

CORE PRODUCT INFORMATION

SA LUMIN EX LED Area Light 110V
c/w CEAG plug and 20m of braided cable
Order Code: SAAL25-110/FR/CEA/20HRE



SA LUMIN EX LED Area Light 230V
c/w CEAG plug and 20m of braided cable
Order Code: SAAL25-230/FR/CEA/20HRE



Different combinations of plugs and cable lengths also available – please contact SA Equip for more details.

SPECIFICATIONS

CERTIFICATION

Ex II 2 G D
EX db eb mb IIB T4 Gb
EX tb IIIC T104°C Db

INGRESS PROTECTION

IP66

VOLTAGE OPTIONS

110VAC, 230VAC

POWER

300W

PLUG OPTIONS

ATX, CEAG, Stahl

OPERATING TEMPERATURE

-50°C to +50°C

LIGHT OUTPUT

25,000 lumens

LIGHT SOURCE

High Power LEDs

DIMENSIONS

460mm x 385mm x 850mm

WEIGHT

27.3kg (Excluding cable and plug)



LIGHT

You may also need...
Plug, Socket, and Cable guide 16
Product Directory 94 - 104



LED TOWER LIGHT

SAAL25/TW

HIGH PERFORMANCE ATEX LIGHTING TOWER

The SA LUMIN LED Tower Light is a rugged fully ATEX & IECEx certified transportable light, providing high quality illumination for medium to large sized areas with a powerful spread of light. With an integrated manual hand trolley and 5m transportable mast, the SA LUMIN LED Tower Light can be easily positioned and maneuvered to accommodate your needs. The adjustable light head with secure positioning bolt allows efficient angling of the light in both upwards and downwards directions.



BENEFITS

- EX Certified for Zones 1 and 2 (Gas), 21 and 22 (Dust)
- Light output 25,000 lumens
- -50°C to +50°C Operating Temperature (Based on Plug Type)
- Easy plug-and-play application
- 6000K+ colour temperature
- Large spread of high power light
- Durable construction
- Safety cord for additional protection
- 5 year product warranty

SPECIFICATIONS

CERTIFICATION
 II 2 G D
 EX db eb mb IIB T4 Gb
 EX tb IIIC T104°C Db

INGRESS PROTECTION
 IP66

VOLTAGE OPTIONS
 110VAC, 230VAC

PLUG OPTIONS
 ATX, CEAG, Stahl

OPERATING TEMPERATURE
 -50°C to +50°C

LIGHT OUTPUT
 25,000 lumens

LIGHT SOURCE
 High Power LEDs

DIMENSIONS
 Light Head
 460mm x 385mm x 850mm

Mast Extended
 2150mm x 2150mm x 5500mm

Mast Folded
 300mm x 300mm x 1750mm

WEIGHT
 105kg (Excluding cable and plug)

CORE PRODUCT INFORMATION

SA LUMIN EX LED Tower Light 110V
 c/w CEAG plug and 20m of braided cable
 Order Code: SAAL25-110/TW/CEA/20HRE



SA LUMIN EX LED Tower Light 230V
 c/w CEAG plug and 20m of braided cable
 Order Code: SAAL25-230/TW/CEA/20HRE



Trolley for SA LUMIN Tower Light
 Order Code: SAAL/TR



Different combinations of plugs and cable lengths also available – please contact SA Equip for more details.

SAAL25/TW Copyright © 2023 SA Equip LLP. All rights reserved. E&OE V6



LIGHT

VESSEL ENTRY KITS

SAVK



VERSATILE 24V VESSEL ENTRY LIGHTING SYSTEM YOU CAN RELY ON

Our ATEX certified vessel entry kits have developed a formidable reputation as a highly reliable lighting system, designed to safeguard your employees in the most challenging environments. It is an ideal system for confined space entry, allowing operators to create a **safer, more reliable and cost-effective** lighting set-up for use in Zone 1 hazardous areas.

SA LUMIN vessel entry kits are highly configurable and using a combination of SA POWERNET and SA LUMIN technologies, the kits deliver efficient 24V lighting for use in vessel entry, tank cleaning and maintenance and routine inspections.



BENEFITS

- EX Certified for Zones 1 & 2 (Gas), 21 & 22 (Dust)
- INMETRO Certified
- Safe low voltage
- Highly ruggedised transformer unit
- Exceptional LED light output
- Easy plug & play application
- Multiple configurations available
- Unique SA Equip armoured cable
- Extremely durable
- Wide range of compatible accessories

SPECIFICATIONS

- CERTIFICATION**
See product datasheets
- INGRESS PROTECTION**
IP66
- OPERATING TEMPERATURE**
-20°C to +55°C
- CONFIGURATION**
Transformer + 4 lights
- TRANSFORMER RATING**
400VA
- TRANSFORMER OUTPUT**
4 x 24V 3 pin socket outlets
- INPUT VOLTAGE OPTIONS**
110VAC, 230VAC
- CABLE LENGTH (LIGHTS)**
20m (or as required)
- CABLE LENGTH (TRANSFORMER)**
15m (or as required)

For individual product specifications, see separate datasheets

CORE PRODUCT INFORMATION

SA LUMIN EX LED Worklight 100 Vessel Entry Kit
with 15m of braided cable & CEAG input plug, 4 x SA LUMIN EX LED Worklight 100, 24V, each with 20m of braided cable and ATX plug
c/w 1 x 110V-24V Transformer
Order Code: SAVK100/244-110/CEA
c/w 1 x 230V-24V Transformer
Order Code: SAVK100/244-230/CEA



SA LUMIN EX LED Floodlight Vessel Entry Kit
with 15m of braided cable and CEAG input plug, 4 x SA LUMIN EX LED Compact Floodlights 24V, each with 20m of braided cable & ATX plug
c/w 1 x 110V-24V Transformer
Order Code: SAVK300F/244-110/CEA
c/w 1 x 230V-24V Transformer
Order Code: SAVK300F/244-230/CEA.



SA LUMIN EX LED Worklight 200 Vessel Entry Kit
with 15m of braided cable & CEAG input plug, 4 x SA LUMIN EX LED Worklight 200, 24V, each with 20m of braided cable and ATX plug
c/w 1 x 110V-24V Transformer
Order Code: SAVK200/244-110/CEA
c/w 1 x 230V-24V Transformer
Order Code: SAVK200/244-230/CEA



You may also need...
Plug, Socket, and Cable guide 16
Product Directory 94 - 104



LIGHT

HEAT LIGHT AIR POWER



Air Mover 56



Filtration Unit 58



Compact Filtration Unit 60



Negative Pressure Unit 62



Anti-static Reinforced Ducting 64



Anti-static Layflat Ducting 66



Ducting Connectors 68



Extraction Hood 70



Fuel Tank Adaptor Flange 72



Air Mover & Area Light Trolley 74



Manway Ducting Adaptors 76



Air Mover & Area Light - Black 78

AIR MOVER

SAF35



TAKE A BREATH OF FRESH AIR

The SA CYCLONE Air Mover is a high-power portable ventilation fan designed for safe and reliable extraction of dangerous vapors in hazardous environments. With the use of interchangeable duct adaptors one unit can be configured for 30cm and 40cm applications. The compact design and versatile construction provides increased mobility and performance in the most rigorous conditions. With maximum airflow of 5179 m³/hr, our Air Mover safeguards you when it matters most.



BENEFITS

- EX Certified for Zones 1 and 2
- INMETRO Certified
- Configurable for use with 30cm & 40cm ducting
- High airflow
- Operates on 50 or 60Hz
- Ergonomic design
- Easy carry handles
- Integral cable storage
- Stackable
- Used as blower or exhauster
- Tough and durable
- Lightweight
- Anti-static polyethylene housing

CORE PRODUCT INFORMATION

SA CYCLONE EX Air Mover 35cm

110V c/w ATX plug and 10m braided cable

Order Code: SAF35/110-00/ATX/10HRE

110V c/w CEAG plug and 10m braided cable

Order Code: SAF35/110-00/CEA/10HRE

230V c/w ATX plug and 10m braided cable

Order Code: SAF35/230-00/ATX/10HRE

230V c/w CEAG plug and 10m braided cable

Order Code: SAF35/230-00/CEA/10HRE



SA CYCLONE EX Air Mover c/w 30cm adaptors

110V, ATX plug and 10m braided cable

Order Code: SAF35/110-30/ATX/10HRE

110V, CEAG plug and 10m braided cable

Order Code: SAF35/110-30/CEA/10HRE

230V, ATX plug and 10m braided cable

Order Code: SAF35/230-30/ATX/10HRE

230V, CEAG plug and 10m braided cable

Order Code: SAF35/230-30/CEA/10HRE



SA CYCLONE EX Air Mover c/w 40cm adaptors

110V, ATX plug and 10m braided cable

Order Code: SAF35/110-40/ATX/10HRE

110V, CEAG plug and 10m braided cable

Order Code: SAF35/110-40/CEA/10HRE

230V, ATX plug and 10m braided cable

Order Code: SAF35/230-40/ATX/10HRE

230V, CEAG plug and 10m braided cable

Order Code: SAF35/230-40/CEA/10HRE



STAHL connectors and different cable types & lengths also available – please contact SA Equip for more details.

SPECIFICATIONS

CERTIFICATION

Ex II 2 G

Ex db eb h IIB+H2 T4 Gb

INGRESS PROTECTION

IP66

OPERATING TEMPERATURE

-40°C to +55°C

RUN TIME

Continuous

MOTOR PROTECTION

Thermal cut-out

FAN CASING

Anti-static polyethylene

Flame retardant &

chemical resistant

CABLE LENGTH

10m (or as required)

VOLTAGE OPTIONS

110VAC, 230VAC (50/60Hz)

FREE AIRFLOW –

30CM VERSION

(Independently tested)

1953cfm (3319 m³/hr) @50Hz

2185cfm (3712 m³/hr) @60Hz

FREE AIR FLOW –

40CM VERSION

(Independently tested)

2683cfm (4559 m³/hr) @50Hz

3048cfm (5179 m³/hr) @60Hz

START UP CURRENT

110V: 50Hz: 21A, 60Hz: 17A

230V: 50Hz: 12A, 60Hz: 12A

RUN CURRENT

110V: 50Hz: 6A, 60Hz: 7A

230V: 50Hz: 3A, 60Hz: 5A

DIMENSIONS

458mm (l) x 349mm (w) x 590mm (h)

458mm (l) x 498mm (w) x 590mm (h)

(with adaptors)

WEIGHT

22kg (without cable)

NOISE LEVEL @ 1 METRE

78dBA – 50Hz

81dBA – 60Hz

You may also need...

Product Directory 94 – 104



AIR

FILTRATION UNIT SAFU



CREATE CLEAN, BREATHABLE AIR

The SA CYCLONE Filtration Unit is a versatile portable unit that allows you to filter extracted air in multiple different applications. It is simply connected inline with flexible ducting and an air mover and as the air moves through it removes particles, odours and/or dust as relevant, expelling clean air from the output.

The unit is also suitable for use in Hazardous Areas Zones 1 and 2 as it has undergone an ignition hazard assessment. It is fully compatible with the SA CYCLONE Air Mover and Anti Static Ducting, meaning a complete temporary ventilation and filtration system can be created using the different elements.

The unit is completely modular and is provided with filters for your application. Other filters can also be provided so you can configure your unit for the specific task you are undertaking. Filter units can be provided for hot work, paint or dust scenarios, and there is also a certified HEPA version which will remove potential bacteria and viruses from the air.

The unit is fitted with duct connectors and can be used either with 30cm or 40cm flexible ducting.

The unit also has an airflow indicator incorporated which measures pressure differential across the filters and gives an indication of when the filters are getting blocked and need to be cleaned or changed.



BENEFITS

- Suitable for Hazardous Areas Zones 1 and 2
- Completely modular and configurable
- Highly mobile and compact
- Wheels for easy manoeuvring
- Heavy duty construction
- Configurable for use with 30cm and 40cm ducting
- Compatible with SA CYCLONE Air Mover
- Compatible with SA CYCLONE Anti-static Ducting
- Fully weatherproof and suitable for extreme environments
- Gauge for showing when filter blocked

CORE PRODUCT INFORMATION

SA CYCLONE FILTRATION UNIT
c/w 30cm duct adaptors
With Welding Filter Set
Order Code: SAFU/30-WD/F1
With Dust Filter Set
Order Code: SAFU/30-DU/F1
With Paint Filter Set
Order Code: SAFU/30-PT/F1
With HEPA/Bacterial Filter Set
Order Code: SAFU/30-HP/F1



SA CYCLONE FILTRATION UNIT
c/w 40cm duct connectors
With Welding Filter Set
Order Code: SAFU/40-WD/F1
With Dust Filter Set
Order Code: SAFU/40-DU/F1
With Paint Filter Set
Order Code: SAFU/40-PT/F1
With HEPA/Bacterial Filter Set
Order Code: SAFU/40-HP/F1



SPECIFICATIONS

CONSTRUCTION

High quality stainless steel with polymer duct connector

DESIGN

Hinged lid with safety stays allowing easy access, heavy duty swivel wheels for mobility

FILTER SYSTEM

| | |
|---------|--|
| Welding | ATEX G4 Pre Filter Activated Carbon Filters |
| Dust | ATEX G4 Pre Filter Particulate Filter |
| Paint | ATEX G4 Pre Filter Particulate Filter Activated Carbon Filters |
| HEPA | ATEX G4 Pre Filter H14 HEPA Filter |

FILTER SIZE

592mm x 592mm

DUCTING ATTACHMENT

Can be configured to suit 30cm or 40cm Ducting

FREE AIRFLOW

2500m³/hr, pressure drop 340pa (with 30cm Connectors)

FREE AIRFLOW

2500m³/hr, pressure drop 300pa (with 40cm Connectors)

DIMENSIONS

970mm (l) x 665mm (w) x 740mm (h)

WEIGHT

Without Filters 50kg
With Filters (including Carbon) 100kg

You may also need...
Product Directory 94 - 104



**COMPACT
FILTRATION
UNIT**
SACFU



**ULTRA COMPACT MOBILE
AIR FILTRATION**

The SA CYCLONE Compact Filtration Unit provides 2 stage air filtration in an exceptionally versatile package. With a total footprint of just 79cm x 68cm, the unit can easily be carried by 2 people, fit through a standard doorway, and generally be located in difficult to access areas. Whilst it is very compact, it still packs a punch effectively providing 2 stage filtration (typically dust) with an air volume of 2500 cubic metres per hour. Further adding to its versatility, if you require 3 stage filtration, for example to extract paint fumes, you can add a second SACFU unit to provide the 3rd stage carbon filtration.

The Compact Filtration Unit includes heavy duty castors as well as carry handles and can also be lifted using slings. It is available with different size duct adaptors like other products in the SA CYCLONE range to allow connection to 20cm, 30cm or 40cm ducting. The unit also has an airflow indicator incorporated which measures pressure differential across the filters and gives an indication of when the filters are getting blocked and need to be cleaned or changed.



BENEFITS

- Suitable for Hazardous Areas Zones 1 and 2
- Completely modular and configurable
- Highly mobile and compact
- Wheels for easy manoeuvring
- Heavy duty construction
- Configurable for use with 30cm and 40cm ducting
- Compatible with SA CYCLONE Air Mover
- Compatible with SA CYCLONE Anti-static Ducting
- Fully weatherproof and suitable for extreme environments

SPECIFICATIONS

CONSTRUCTION
High quality stainless steel with polymer duct connector

FEATURES
Airflow indicator, Carry handles, hinged lid with safety straps allowing easy access, heavy duty swivel wheels for mobility

FILTER SYSTEM

| | |
|---------|--|
| Welding | ATEX G4 Pre Filter Activated Carbon Filters |
| Dust | ATEX G4 Pre Filter Particulate Filter |
| HEPA | ATEX G4 Pre Filter H14 HEPA Filter |

FILTER SIZE
592mm X592mm

DUCTING ATTACHMENT
Can be configured to suit
20cm, 30cm or 40cm Ducting

FREE AIRFLOW
2400 m³/hr, pressure drop
150 pa (with 40cm Connectors)

WEIGHT
Without Filters 30kg

DIMENSIONS
Size: 790mm (l) x 680mm (w)
x 695mm (h)

CORE PRODUCT INFORMATION

SA CYCLONE COMPACT FILTRATION UNIT

c/w 20cm duct adaptors

With Dust Filter Set

Order Code: SACFU/20-DU/FI

With Welding Filter Set

Order Code: SACFU/20-WD/FI

With HEPA/Bacterial Filter Set

Order Code: SACFU/20-HP/FI

SA CYCLONE COMPACT FILTRATION UNIT

c/w 30cm duct adaptors

With Dust Filter Set

Order Code: SACFU/30-DU/FI

With Welding Filter Set

Order Code: SACFU/30-WD/FI

With HEPA/Bacterial Filter Set

Order Code: SACFU/30-HP/FI

SA CYCLONE COMPACT FILTRATION UNIT

c/w 40cm duct adaptors

With Dust Filter Set

Order Code: SACFU/40-DU/FI

With Welding Filter Set

Order Code: SACFU/40-WD/FI

With HEPA/Bacterial Filter Set

Order Code: SACFU/40-HP/FI



You may also need...
Product Directory 94 - 104



AIR

NEGATIVE PRESSURE UNIT

SANPU



CONTROLLED NEGATIVE PRESSURE

The unique SA CYCLONE Negative Pressure Unit is an EX compliant system for providing a controlled negative pressure inside a temporary habitat, and meets the requirements of BS8520 Part 2 and HSE Guidance HS247. Developed to be used when carrying out asbestos removal in potentially flammable atmospheres, it can also be used in other scenarios where negative pressure is required, including when removing lead-based paint. Designed as part of the SA CYCLONE modular system, the NPU is used with the SA CYCLONE Air Mover and Ducting, to create a total EX compliant solution for use in hazardous zones 1 and 2.

As the air mover is a separate unit, this can be used both for other applications, and also in conjunction with NPU when required, giving total flexibility on your work site. The fully mobile NPU includes full HEPA filtration and when used with the SAF35 Air Mover will provide extraction of up to 1760 cubic metres per hour. The airflow is fully controllable using the integrated damper. Also available is the optional Roving Head which allows the extraction point to be moved around inside the containment area.



BENEFITS

- Suitable for Hazardous Areas Zones 1 and 2
- Completely modular and configurable
- Highly mobile and compact
- Wheels for easy manoeuvring
- Heavy duty construction
- Configurable for use with 30cm and 40cm ducting
- Compatible with SA CYCLONE Air Mover
- Compatible with SA CYCLONE Anti-static Ducting
- Fully weatherproof and suitable for extreme environments

CORE PRODUCT INFORMATION

SA CYCLONE Negative Pressure Unit-Asbestos c/w 30cm connector
Order Code: SANPU/30-AB

SA CYCLONE Negative Pressure Unit-Asbestos c/w 40cm connector
Order Code: SANPU/40-AB

SA CYCLONE Roving Head c/w 5m Ducting-Asbestos
Order Code: SANPU/RH



SPECIFICATIONS

STANDARDS

EX compliant
BS8520-2:2009 compliant
HSG247 compliant
CDG 2009 compliant

CONSTRUCTION

High quality stainless steel with polymer duct connector

FEATURES

Airflow indicator
Non Return Flap
Manual damper for airflow control
Heavy duty swivel wheels w/ brakes for mobility
Security Captive bolts on NPU Lid
Fully Welded safety critical body joints
Sealed Transit Cover w/ Security Captive Bolts
Removable Pre Filter Assembly
Roving Head Option available on request

FILTER SYSTEM

Dust ATEX G4 Pre Filter Particulate Filter HEPA H14 HEPA Filter

DUCTING ATTACHMENT

Can be configured to suit 30 and 40cm Ducting

FREE AIRFLOW

(WHEN USED WITH SAF35 AIR MOVER)
1760 m³/Hr (Adjustable)

FILTER SIZE

592mm x 592 x 50mm ATEX G4 Pre Filter
592 x 592 x 292 H 14 HEPA Filter

WEIGHT

77 kg (83 kg including Transit Plate)

DIMENSIONS

Size: 936mm (l) x 700mm (w) x 806mm (h)

You may also need...
Product Directory 94 - 104



AIR

ANTI-STATIC REINFORCED DUCTING

SAFD

VENTILATES SAFELY, FOR INCREASED CONTROL

The SA CYCLONE anti-static duct system is highly flexible ducting designed to enable you to create a safe ventilation system for use in ATEX zones 1 and 2. Carefully selected materials and a robust design combine to deliver safety against electrostatic discharge and preventing the ignition of explosive gases. Constructed from anti-static reinforced polymer these ducts are durable, heavy-duty and flame retardant. The integral ducting bag enables fast and easy compacting for improved transport and storage of the product.



BENEFITS

- Flame retardant
- High quality construction
- Heavy duty attachment methods
- Fully flexible ducting
- Integrated steel helix reinforcement
- Easy storage and transportation
- Integral carry bag
- Various lengths and widths of ducting available
- Single and dual strap versions available

SPECIFICATIONS

- DUCT FIXING**
Heavy duty tensioning strap
- DUCT CONSTRUCTION**
Anti-static vinyl coated polyester fabric with integrated steel helix wire
- DUCT DIAMETERS**
10cm, 20cm, 30cm, 40cm
- DUCT LENGTHS**
5m, 10m
- STRAIGHT COUPLER & Y-PIECE MATERIAL**
Stainless steel with location ribs, anti-slip bands, and safety edging
- STRAIGHT COUPLER & Y-PIECE DIAMETERS**
10cm, 20cm, 30cm, 40cm

CORE PRODUCT INFORMATION

SA CYCLONE Anti-static Ducting 10cm diameter
5m long, single strap **Order Code: SAFD10/05-EX/1S**
5m long, dual strap **Order Code: SAFD10/05-EX/2S**
10m long, single strap **Order Code: SAFD10/10-EX/1S**
10m long, dual strap **Order Code: SAFD10/10-EX/2S**



SA CYCLONE Anti-static Ducting 20cm diameter
5m long, single strap **Order Code: SAFD20/05-EX/1S**
5m long, dual strap **Order Code: SAFD20/05-EX/2S**
10m long, single strap **Order Code: SAFD20/10-EX/1S**
10m long, dual strap **Order Code: SAFD20/10-EX/2S**



SA CYCLONE Anti-static Ducting 30cm diameter
5m long, single strap **Order Code: SAFD30/05-EX/1S**
5m long, dual strap **Order Code: SAFD30/05-EX/2S**
10m long, single strap **Order Code: SAFD30/10-EX/1S**
10m long, dual strap **Order Code: SAFD30/10-EX/2S**



SA CYCLONE Anti-static Ducting 40cm diameter
5m long, single strap **Order Code: SAFD40/05-EX/1S**
5m long, dual strap **Order Code: SAFD40/05-EX/2S**
10m long, single strap **Order Code: SAFD40/10-EX/1S**
10m long, dual strap **Order Code: SAFD40/10-EX/2S**



You may also need...
Product Directory 94 - 104



AIR

ANTI-STATIC LAYFLAT DUCTING SAFD LF

EFFECTIVE VENTILATION OF CONFINED SPACES

The SA CYCLONE anti-static layflat ducting is a highly durable ducting which is extremely compact for storage yet will thrive even in extreme environments. Ideal for use where air is being blown into an area, it is extremely easy to deploy, lightweight and when being used through access points, is easily pushed out of the way during access or egress of an area. The layflat ducting also includes reinforced eyelets to allow suspension using cable ties or other methods, and heavy-duty adjustable straps allow for easy connection to air movers or adaptors.



BENEFITS

- Flame retardant
- Anti-static
- High quality construction
- Heavy duty attachment straps
- Extremely flexible
- Compact storage
- Can be used through access points
- Integrated eyelets for easy hanging

SPECIFICATIONS

- DUCT FIXING**
Heavy duty straps
- DUCT CONSTRUCTION**
Anti-static tough
PVC based fabric
- DUCT DIAMETERS**
10cm, 20cm, 30cm, 40cm
- DUCT LENGTH**
10m (can be cut down, if required)

CORE PRODUCT INFORMATION

SA CYCLONE Anti-static Layflat Ducting 10cm diameter
10m long, dual strap
Order Code: SAFD10LF/10-EX



SA CYCLONE Anti-static Layflat Ducting 20cm diameter
10m long, dual strap
Order Code: SAFD20LF/10-EX



SA CYCLONE Anti-static Layflat Ducting 30cm diameter
10m long, dual strap
Order Code: SAFD30LF/10-EX



SA CYCLONE Anti-static Layflat Ducting 40cm diameter
10m long, dual strap
Order Code: SAFD40LF/10-EX



You may also need...
Product Directory 94 - 104

DUCTING CONNECTORS

SAFD CU, YC, DA



CONNECTING THE VENTILATION SYSTEM TOGETHER

The complete range of SA CYCLONE Couplers, Y Couplers, Adaptors and Reducers make it possible to create temporary ventilation and ducting systems in multiple configurations. Constructed from highly polished marine grade stainless steel, they are the essential connecting pieces of your ventilation including changing ducting size and splitting ducting 2 ways. The connectors included integrated ribs to ensure that the ducting stays secure.

BENEFITS

- Suitable for extreme and marine environments
- Very robust construction
- Multiple options available
- Can be used with reinforced or layflat ducting
- Designed to hold ducting securely
- Safety edge to protect hands and surfaces

SPECIFICATIONS

CONSTRUCTION
Stainless steel, rolled and welded for strength

FINISH
Highly polished, suitable for marine environment

FEATURES
Rib for secure hold of ducting, rolled safety edge

DIAMETERS
10cm, 20cm, 30cm, 40cm

CONNECTION OPTIONS
Duct to duct (same size)
Duct to duct (reducing)
Duct to 2x duct (same size)
Duct to 2x duct (reducing)
Air mover to reduced size duct
Air mover to 4x size duct (reducing)

CORE PRODUCT INFORMATION

SA CYCLONE Duct Coupler

- 10cm diameter
Order Code: SAFD10/CU
- 20cm diameter
Order Code: SAFD20/CU
- 30cm diameter
Order Code: SAFD30/CU
- 40cm diameter
Order Code: SAFD40/CU



SA CYCLONE Duct Y Coupler

- 10cm diameter
Order Code: SAFD10/YC
- 20cm diameter
Order Code: SAFD20/YC
- 30cm diameter
Order Code: SAFD30/YC
- 40cm diameter
Order Code: SAFD40/YC



SA CYCLONE Duct Coupler/Reducer

- 20cm to 10cm diameter
Order Code: SAFD2010/CUR
- 30cm to 10cm diameter
Order Code: SAFD3010/CUR
- 30cm to 20cm diameter
Order Code: SAFD3020/CUR



SA CYCLONE Duct Y Coupler/Reducer

- 20cm to 2x10cm diameter
Order Code: SAFD20/10/YC
- 30cm to 2x10cm diameter
Order Code: SAFD30/10/YC
- 30cm to 2x20cm diameter
Order Code: SAFD30/20/YC
- 40cm to 2x20cm diameter
Order Code: SAFD40/20/YC



SA CYCLONE Adaptor/Reducer (Air Mover to Duct)

- Air Mover to 20cm diameter
Order Code: SAFD3020/DA
- Air Mover to 4x10cm diameter
Order Code: SAFD40/10/AM



You may also need...
Product Directory 94 - 104

EXTRACTION HOOD

SAFD H



EFFECTIVE FUME EXTRACTION

The SA CYCLONE Extraction Hood is designed to connect to flexible ducting and form part of a LEV/fume extraction system. The tapered shape provides optimum airflow for ensuring maximum draw of fumes and dust. The robust yet lightweight construction, along with the integrated handle and fixing magnets, ensures this product will work well even in the most difficult environments. Versions are available for different duct sizes.



BENEFITS

- Compatible with the SA CYCLONE Filtration Unit range
- Suitable for harsh environments
- Integrated handle for portability
- High strength magnets included for optimum positioning
- Multiple options available

SPECIFICATIONS

- FEATURES**
Carry handle and magnets fitted as standard.
- CONSTRUCTION**
Galvanised steel
- HOOD DIMENSIONS**
50x50cm
60x60cm
70x70cm
- DUCTING DIAMETERS**
Can be configured to suit 20, 30 and 40cm Ducting

CORE PRODUCT INFORMATION

SA CYCLONE Extraction Hood 20cm diameter 50x50cm
Order Code: SAFD20/H5050/AHFM



SA CYCLONE Extraction Hood 30cm diameter 60x60cm
Order Code: SAFD30/H6060/AHFM



SA CYCLONE Extraction Hood 40cm diameter 70x70cm
Order Code: SAFD40/H7070/AHFM



FUEL TANK ADAPTOR FLANGE

SAFD



SA CYCLONE FUEL TANK ADAPTOR FLANGE 20CM

The SA Cyclone Fuel Tank Adaptor Flange is a versatile portable unit that allows you to filter extracted air within fuel tanks. Fully compatible and connected inline with the SA Cyclone Reinforced Ducting, Filtration unit and Air mover to removing fumes from fuel tanks ejecting clean air from the output.



BENEFITS

- Suitable for attaching ducting to aircraft fuel tanks
- Very robust construction
- Multiple options available
- Can be used with reinforced or layflat ducting
- Designed to hold ducting securely
- Suitable for 600x300mm
- Fuel tank entry point

CORE PRODUCTS

SA CYCLONE Fuel Tank Adaptor Flange 10cm
Order code: SAFD10/FTF/400700



SA CYCLONE Fuel Tank Adaptor Flange 20cm
Order Code: SAFD20/FTF/400700



SPECIFICATIONS

CONSTRUCTION
Aluminium duct adaptor with flame retardent anti-static gasket.

FEATURES
Rib for secure hold of ducting, rolled safety edge

DIAMETERS
10cm, 20cm

WEIGHT
2.2kg

SIZE
Size: 700x400x120mm (LxWxH)



AIR

You may also need...
Product Directory 94 - 104

SA CYCLONE

SA LUMIN

AIR MOVER & AREA LIGHT TROLLEY

SAAF/TR01



SA TROLLEY FOR AIR MOVER & AREA LIGHT – BLACK

SA Equip lightweight heavy-duty stainless steel trolley, designed for transporting the SA Cyclone Air Mover and SA Lumin Area Light.

Features 4 lockable swivel castor wheels and a locking mechanism to hold equipment in place for easy maneuvering around site.



BENEFITS

- Fits the SAF35, High Power Fan & Area Light
- 4 braked swivel castors
- Stainless Steel & coated
- Locking mechanism to hold products in place
- Weight: 5.5kg
- Size: 475x455x120mm (LxWxH)

SPECIFICATIONS

WEIGHT
5.5kg

SIZE
475x455x120mm (LxWxH)

CONSTRUCTION
Stainless steel and coated

CORE PRODUCTS

SA CYCLONE Air Mover Trolley
Order code: SAAF/TR01



You may also need...
Product Directory 94 - 104

SAAF/TR01 Copyright © 2023 SA Equip LLP. All rights reserved. E&OE V6



LIGHT

AIR

MANWAY DUCTING ADAPTORS

SAFD MW

PROVIDING THE INTERFACE BETWEEN VENTILATION SYSTEM AND TANK

The SA CYCLONE Manway Adaptor is a unique solution for connecting SA CYCLONE flexible ducting to a manway or access hatch on a vessel, yet also allowing easy and rapid personnel entry or exit through the access hatch while installed.

Highly durable, it is constructed from two parts. The flange plate is available in many different versions and is designed to match the entry point flange on the tank. It is bolted onto the flange using some of the flange bolts. The access door is then located on the flange plate and latches shut using high strength magnets. This ensures the ducting is securely attached to the vessel ensuring highly effective blowing or extraction.

The flange plates can be made for virtually any opening size, as long as basic information can be provided. Plates can be created either from key dimensions provided or from flange drawings if preferred.



BENEFITS

- Suitable for extreme environments
- Fast and easy install onto tanks, vessels and columns
- Very robust
- Multiple options available
- Can be used with reinforced or layflat ducting

SPECIFICATIONS

CONSTRUCTION
Powder coated steel/stainless steel with antistatic polymer duct adaptor

FEATURES
Easy fit 2 part system

High strength hinge

Magnetic catch for firm hold and easy egress

DUCT DIAMETERS
20cm, 30cm, 40cm

DIMENSIONS
Small Door – opening size 450mm diameter

Medium Door – opening size 500mm diameter

Large Door – opening size 600mm diameter

Flange Plate – as required

CORE PRODUCTS

SA CYCLONE Manway Adaptor 20cm diameter
Small door, flange details as specified
Order Code: SAFD20/MW01/*****



SA CYCLONE Manway Adaptor 20cm diameter
Large door, flange details as specified
Order Code: SAFD20/MW03/*****



SA CYCLONE Manway Adaptor 30cm diameter
Small door, flange details as specified
Order Code: SAFD30/MW01/*****



SA CYCLONE Manway Adaptor 30cm diameter
Large door, flange details as specified
Order Code: SAFD30/MW03/*****



SA CYCLONE Manway Adaptor 40cm diameter
Small door, flange details as specified
Order Code: SAFD40/MW01/*****



SA CYCLONE Manway Adaptor 40cm diameter
Large door, flange details as specified
Order Code: SAFD40/MW03/*****



SA CYCLONE Manway Adaptor 20cm diameter
Medium door, flange details as specified
Order Code: SAFD20/MW02/*****



SA CYCLONE Manway Adaptor 30cm diameter
Medium door, flange details as specified
Order Code: SAFD30/MW02/*****



SA CYCLONE Manway Adaptor 40cm diameter
Medium door, flange details as specified
Order Code: SAFD40/MW02/*****



Complete product code depends on flange specification. Please contact SA Equipment with details.



AIR

You may also need...
Product Directory 94 - 104

VENTURI AIR MOVER

SAV



POWERFUL, SIMPLE AND TRULY PORTABLE

The market-leading air-driven ventilator, it has no moving parts, and instead uses high velocity compressed air to create a pulling action and a subsequent large volume displacement through a diffuser, connecting to ducting or hoses where required. The smallest unit weighs just 2kg. Our Venturi units are exceptionally reliable and require virtually no maintenance.



BENEFITS

- Powered by compressed air or saturated steam
- Tough and durable
- Anti-static polymer housing
- Highly reliable
- Minimal maintenance
- Cylindrical mixing chamber delivers higher induction ratios
- Fits standard API openings
- 3 sizes available – 13cm, 20cm, 30cm

CORE PRODUCT INFORMATION

SA CYCLONE Venturi Air Mover 13cm (3" flange)
Order Code: SAV13/AP

SA CYCLONE Venturi Air Mover 20cm (3" flange)
Order Code: SAV20/AP

SA CYCLONE Venturi Air Mover 30cm (6" flange)
Order Code: SAV30/AP

SA CYCLONE Venturi Air Mover 30cm (6" flange)
c/w 30cm Duct Adaptor
Order Code: SAV30/DA30

SA CYCLONE Anti-static Reinforced Ducting

You may also need...
Antistatic Duct System 64
Air Mover 58
Product Directory 94 - 104



SPECIFICATIONS

OPERATING TEMPERATURE
-50°C to +100°C (Minimum operating temperature subject to air quality)

RUN TIME
Continuous

FAN TYPE
Venturi Cone

FAN CASING
Anti-static Polyethylene

POWER SOURCE
Compressed Air / Saturated Steam

MAXIMUM PRESSURE
140psi/9.65 bar

FREE AIRFLOW @ 60PSIG
865cfm (1470m³/hour) – 13cm
1135cfm (1928m³/hour) – 20cm
2560cfm (4349m³/hour) – 30cm

FREE AIRFLOW @ 80PSIG
1080cfm (1835m³/hour) – 13cm
1310cfm (2225m³/hour) – 20cm
3020cfm (5131m³/hour) – 30cm

FREE AIRFLOW @ 100PSIG
1205cfm (2047m³/hour) – 13cm
1465cfm (2489m³/hour) – 20cm
3700cfm (6286m³/hour) – 30cm

AIR CONSUMPTION @ 60PSIG
30cfm (51m³/hour) – 13cm
30cfm (51m³/hour) – 20cm
60cfm (102m³/hour) – 30cm

AIR CONSUMPTION @ 80PSIG
40cfm (68m³/hour) – 13cm
40cfm (68m³/hour) – 20cm
80cfm (136m³/hour) – 30cm

AIR CONSUMPTION @ 100PSIG
50cfm (85m³/hour) – 13cm
50cfm (85m³/hour) – 20cm
100cfm (170m³/hour) – 30cm

INLET CONNECTION
Claw coupling (or as required)
13cm & 20cm – 1/2" NPT
30cm – 1" NPT

FLANGE
API 3" (6.56" BC) – 13cm & 20cm
API 6" (10.5" BC) – 30cm

WEIGHT
2kg – 13cm
3kg – 20cm
6.8kg – 30cm

DIMENSIONS
425mm x 180mm Ø – 13cm
800mm x 190mm Ø – 20cm
1124mm x 320mm Ø – 30cm



AIR

HEAT LIGHT AIR POWER

SA POWERNET®



Mains Distribution Unit 82



3.8KVA Transformer 84



400VA Transformer 86



Splitter Box 88



Extension Reel 90



Extension Lead 92

—
*"The MDU is absolutely brilliant.
I like the simple way it works."*

Manager of Major Contractor for North Sea

MAINS DISTRIBUTION UNIT

PNDU

POWER WHERE IT'S NEEDED – WITH NO HOT-WORK PERMIT OR STANDBY MAN

The first link between your power supply and your temporary system, our MDU can connect to welding sockets to greatly increase your power supply options. A true plug-and-play system, our MDU connects to a 440V 63A supply, splitting the power to 32A or 16A sockets. It's also extremely portable, weighing in at 55kg, and with a 10m input cable it can be easily moved by personnel without the need for lifting equipment.



BENEFITS

- EX Certified for Zones 1 and 2 (gas)
- Tough and durable
- Full MCB protection
- Easily transportable
- Weighs only 55kg including cable
- Waterproof and dustproof
- Easy maintenance
- Internal safety shield

SPECIFICATIONS

- CERTIFICATION**
 Ex II 2 G Ex de IIC T6
- INGRESS PROTECTION**
 IP66
- OPERATING TEMPERATURE**
 -15/20°C to +40°C
- INPUT CABLE**
 4x10mm Braided (HOFR)
- VOLTAGE**
 400V 3 Phase
- SWITCHING**
 Main incoming isolator.
 Individual isolator on each socket
- PROTECTION**
 Individual MCB on each socket
- DIMENSIONS**
 1150mm (h) x 680mm (w) x 600mm (d)
- WEIGHT (INCL. CABLE)**
 55kg

CORE PRODUCT INFORMATION

SA POWERNET EX MDU 400V 2-way
 c/w CEAG plug, 2 x 32A 4P CEAG sockets, and 10m of HOFR braided cable
Order Code: PNDU440/10-2EX/CEA



SA POWERNET EX MDU 400V 3-way
 c/w CEAG plug, 1 x 32A 4P & 2 x 16A 4P CEAG sockets, and 10m of HOFR braided cable
Order Code: PNDU440/10-12EX/CEA



SA POWERNET EX MDU 400V 4-way
 c/w CEAG plug, 4 x 16A 4P CEAG sockets, and 10m of HOFR braided cable
Order Code: PNDU440/10-4EX/CEA



Different cable lengths also available – please contact SA Equip for more details.



3.8KVA TRANSFORMER

PNLT



PROVIDING 110V OR 230V POWER SAFELY TO YOUR WORK AREA

The SA POWERNET PNLT Transformer is an ATEX approved (Zones 1 and 2, 21 and 22) transportable transformer with a capacity of no less than 3.8KVA. Continuously rated, the PNLT will deliver power safely wherever you need it. Transportation is simple with a wraparound protective marine grade stainless steel frame, fork lift points and certified lifting points. Weighing in at under 100kgs and developed to fit two on a Euro pallet, this unit is highly compact.



BENEFITS

- EX Certified for Zones 1 and 2 (gas), 21 and 22 (dust)
- 3.8KVA continuously rated
- Safe construction
- Dynamic load tested
- Suitable for use down to -40°C
- Tough and durable
- Compact and stable
- Waterproof and dustproof
- Integrated storage for 10m of supply cable
- Easy maintenance
- MCB and RCD Protection
- Certified Transportable

CORE PRODUCT INFORMATION

- SA POWERNET EX Transformer**
 4-way 230V-110V CTE c/w 1 x 230V 16A 3P CEAG plug, 4 x 110V 16A CEAG sockets and 10m of braided cable
Order Code: PNL230110C/10HR/C16/3P
- 4-way 440V-110V CTE c/w 1 x 440V 64A 4P CEAG plug, 4 x 110V 16A CEAG sockets and 10m of braided cable
Order Code: PNL440110C/10HR/C64/4P
- 4-way 440V-230V c/w 1 x 440V 64A 4P CEAG plug, 4 x 230V 16A CEAG sockets and 10m of braided cable
Order Code: PNL440230C/10HR/C64/4P

Different input voltages, connectors and cable lengths are also available – please contact SA Equip for more details.



SPECIFICATIONS

- CERTIFICATION**
 Ex II 2 G D
 Ex db eb IIC T4 Gb
 Ex tb IIIC T135°C Db
- INGRESS PROTECTION**
 IP66
- OPERATING TEMPERATURE**
 -40°C to +40°C
- RATING**
 3800VA
- DIMENSIONS**
 760mm (w) x 580mm (d) x 760mm (h)
- WEIGHT**
 90kg approx.
- INPUT CABLE**
 10m HOFRR (or as required)
- PNLT230110C/10HR/C16/3P**
 Input 230V 16A CEAG Plug
 Input Protection 32A MCB
 Output 110V CTE 4 x 16A CEAG Sockets
 Output Protection 2 x 13A MCB B Type, 30mA RCD
- PNLT440110C/10HR/C64/4P**
 Input 440V 64A 4P CEAG Plug
 Input Protection 16A Fuse
 Output 110V CTE 4 x 16A CEAG Sockets
 Output Protection 2 x 16A MCB B Type, 30mA RCD
- PNLT440230C/10HR/C64/4P**
 Input 440V 64A 4P CEAG Plug
 Input Protection 32A MCB
 Output 230V 4 x 16A CEAG Sockets
 Output Protection 1 x 16A MCB B Type, 30mA RCD

You may also need...
Plug, Socket, and Cable guide 16
 Product Directory 94 - 104



POWER

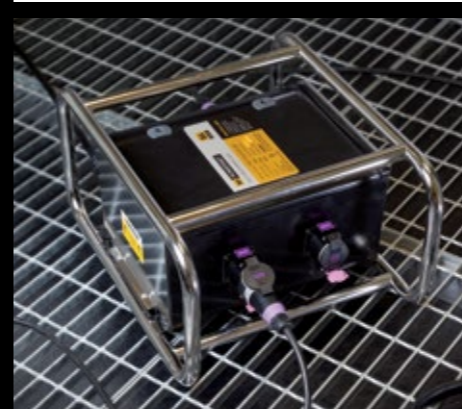
400VA TRANSFORMER

TRA



COMPACT, RUGGED, INCREDIBLY TOUGH

Our SA POWERNET EX 400VA Transformer comprises a composite box mounted via shock absorbers onto a marine-grade steel frame, with a special internal chassis securing the internal components. The result is a phenomenally rugged unit, but with no compromise on portability – at only 17kg and 560mm wide, it'll go anywhere you need it. A range of voltage and output options are available, as well as a Centre Tapped to Earth variant, it's supplied fully tested and ready for use.



BENEFITS

- EX Certified for Zones 1 and 2 (gas), 21 and 22 (dust)
- INMETRO Certified
- Portable, tough, and durable
- Compact and lightweight
- Waterproof and dustproof
- Fuse protected

SPECIFICATIONS

CERTIFICATION

Ex II 2 G D
Ex db eb IIC T4/T5 Gb
Ex tb IIIC T135/100°C Db

INGRESS PROTECTION

IP66

OPERATING TEMPERATURE

-20°C to +40°C (Max 15A)
-20°C to +50°C (Max 12A)
-20°C to +55°C (Max 6A)

RATING

400VA

INPUT VOLTAGE

110VAC (16A Plug)
230VAC (16A Plug)
400VAC (32A Plug)

OUTPUT VOLTAGE

12VAC (4 x Socket outlets)
24VAC (4 x Socket outlets)
42VAC (4 x Socket outlets)
110VAC (4 x Socket outlets)
230VAC (4 x Socket outlets)

DIMENSIONS

560mm (w) x 460mm (d) x 300mm (h)

WEIGHT

17kg (without cable)

CABLE LENGTH

15m (or as required)

CORE PRODUCT INFORMATION

SA POWERNET EX Transformer 4-way

230-24V 400VA, c/w 1 x 16A CEAG plug, 4 x ATX sockets, and 15m of HOFB braided cable

Order Code: **TRA23024/400-4EX/CEA**

110-24V 400VA, c/w 1 x 16A CEAG plug, 4 x ATX sockets, and 15m of HOFB braided cable

Order Code: **TRA11024/400-4EX/CEA**

SA POWERNET EX Transformer CTE 4-way

230-110V 400VA, c/w 1 x 16A CEAG plug, 4 x CEAG sockets, and 15m of HOFB braided cable

Order Code: **TRAC230110/C400-4EX/CEA**

SA POWERNET EX Transformer 4-way

230-42V 400VA, c/w 1 x 16A CEAG plug, 4 x CEAG sockets, and 15m of HOFB braided cable

Order Code: **TRA23042/C400-4EX/CEA**

STAHL connectors and different cable lengths also available – please contact SA Equip for more details.



You may also need...
Standard LED Worklights 38 & 40
Emergency LED Worklight 42
Vessel Entry Kits 52
Splitter Boxes 88
Extension Leads 92 – 93
Plug, Socket, and Cable guide 16
Product Directory 94 – 104

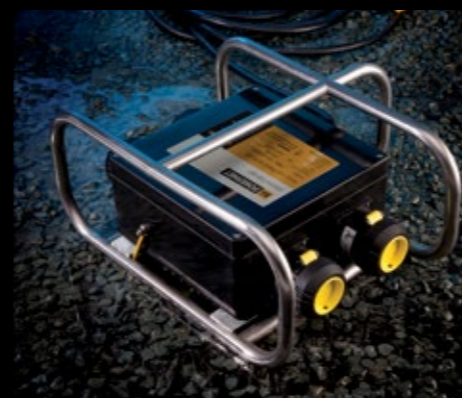
SPLITTER BOX

PNSB



ACHIEVE MORE IN LESS TIME

The SA POWERNET EX Splitter Box safely provides four 16A socket outlets in any environment. The rugged, waterproof and dustproof design makes our box practically indestructible, and it's supplied ready for use in full 'plug-and-play' state. Available in a range of voltage options, and usually available for next-day delivery.



BENEFITS

- EX Certified for Zones 1 and 2 (gas), 21 and 22 (dust)
- INMETRO Certified
- Tough and durable
- Fast delivery times
- Waterproof and dustproof

SPECIFICATIONS

CERTIFICATION

Ex II 2 G D
Ex db eb IIC T6 Gb
Ex tb IIIC T85°C Db

INGRESS PROTECTION

IP65 & IP66

OPERATING TEMPERATURE

-20°C to +55°C (CEAG)
-40°C to +55°C (STAHL)
-40°C to +55°C (ATX)

VOLTAGE

24VAC, 42VAC, 110VAC, 230VAC

INPUT

1 x 16A Plug

OUTPUT

4 x 16A Socket Outlets

DIMENSIONS

450mm (w) x 450mm (d) x 200mm (h)

WEIGHT

6.6kg (without cable)

CABLE LENGTH

15m (or as required)

CORE PRODUCT INFORMATION

SA POWERNET EX Splitter Unit 4-way 110V

c/w 1 x 16A CEAG plug, 4 x 16A CEAG sockets, and 15m of braided HOFR cable

Order Code: **PNSB110/15-4EX/CEA**

c/w 1 x 16A STAHL plug, 4 x 16A STAHL sockets, and 15m of braided HOFR cable

Order Code: **PNSB110/15-4EX/STA**



SA POWERNET EX Splitter Unit 4-way 230V

c/w 1 x 16A CEAG plug, 4 x 16A CEAG sockets, and 15m of braided HOFR cable

Order Code: **PNSB230/15-4EX/CEA**

c/w 1 x 16A STAHL plug, 4 x 16A STAHL sockets, and 15m of braided HOFR cable

Order Code: **PNSB230/15-4EX/STA**



ATX connectors and different cable lengths also available – please contact SA Equip for more details.

You may also need...

- Standard LED Worklights 38 & 40
- Emergency LED Worklight 42
- Transformers 84 & 86
- Extension Leads 92 – 93
- Plug, Socket, and Cable guide 16
- Product Directory 94 – 104



POWER

EXTENSION REEL

PNER

THE WORLD'S FIRST 'OFF THE SHELF' EXTENSION REEL

Designed and built to withstand the most demanding conditions, the SA POWERNET EX Extension Reel is highly portable, stable, waterproof and dustproof. It is available in a wide range of variants accommodating different plug and socket combinations, cable types and voltages.



BENEFITS

- EX Certified for Zones 1 and 2 (gas), 21 and 22 (dust)
- INMETRO Certified
- Highly portable
- Tough stainless steel construction
- Waterproof and dustproof
- Large number of variants available

SPECIFICATIONS

CERTIFICATION

Ex II 2 G D
Ex db eb IIC T5 Gb
Ex tb IIIC T100°C Db IP66

INGRESS PROTECTION

IP66

OPERATING TEMPERATURE

-40°C to +55°C

VOLTAGE

24VAC, 42VAC, 110VAC, 230VAC

INPUT

1 x 16A Plug

OUTPUT

1 x 16A Socket

DIMENSIONS

490mm (h) x 390mm (w) x 400mm (d)

WEIGHT

16.2kg (with HOFR cable)

CABLE LENGTH

25m (or as required)

CORE PRODUCT INFORMATION

SA POWERNET EX Extension Reel 110V
c/w 1 x 16A CEAG plug, 1 x 16A CEAG socket,
and 25m of braided HOFR cable
Order Code: PNER110EX/25HRE/CEA



SA POWERNET EX Extension Reel 230V
c/w 1 x 16A CEAG plug, 1 x 16A CEAG socket,
and 25m of braided HOFR cable
Order Code: PNER230EX/25HRE/CEA



ATX & STAHL connectors, different cable lengths and types are also available in 24V and 42V versions – please contact SA Equip for more details.

You may also need...
Standard LED Worklights 38 & 40
Emergency LED Worklight 42
Transformers 84 & 86
Splitter Boxes 88
Plug, Socket, and Cable guide 16
Product Directory 94 - 104



EXTENSION LEAD

PNEL

A COST-EFFECTIVE SOLUTION, WHEREVER YOU NEED POWER

Built to the highest standards for exceptional reliability, the SA POWERNET EX Extension Leads deliver power to hazardous areas effectively and with minimum hassle. ATEX compliant, tough and durable, compatible with all SA lighting equipment and supplied ready to use.



BENEFITS

- EX Certified for Zones 1 and 2 (gas), 21 and 22 (dust)
- INMETRO Certified
- Tough and durable
- Fast delivery times
- Waterproof and dustproof

SPECIFICATIONS

CERTIFICATION

Ex II 2 GD
Ex de IIC T5 Gb
Ex tb IIIC T100°C Db IP66

INGRESS PROTECTION

IP66

OPERATING TEMPERATURE

-20°C to +55°C (CEAG)
-40°C to +55°C (STAHL)
-40°C to +55°C (ATX)

VOLTAGE

24VAC, 42VAC, 110VAC, 230VAC, 400VAC

INPUT

1 x 16A Plug
(32A on 400VAC)

OUTPUT

1 x 16A Mobile Socket
(32A on 400VAC)

WEIGHT

6kg (HOFER) - 15m Extension Lead

CORE PRODUCT INFORMATION

SA POWERNET EX Extension Lead 24V

c/w 1 x 16A ATX plug, 1 x 16A ATX socket and 20m of braided HOFER cable (HRE), (Operating Temp -15°C to + 40°C)

Order Code: **PNEL24EX20HRE/ATX16/3P**



SA POWERNET EX Extension Lead 400V

c/w 1 x 32A 4P CEAG plug, 1 x 32A 4P CEAG socket and 25m of braided HOFER cable (HR)

Order Code: **PNEL400EX/25HRE/CEA16/4P**



SA POWERNET EX Extension Lead 110V

c/w 1 x 16A CEAG plug, 1 x 16A CEAG socket and 15m of braided HOFER cable

Order Code: **PNEL110EX/15HRE/CEA16/3P**



And 25m of braided HOFER cable

Order Code: **PNEL110EX/25HRE/CEA16/3P**

SA POWERNET EX Extension Lead 230V

c/w 1 x 16A CEAG plug, 1 x 16A CEAG socket and 15m of braided HOFER cable

Order Code: **PNEL230EX/15HRE/CEA16/3P**



And 25m of braided HOFER cable

Order Code: **PNEL230EX25HRE/CEA16/3P**

ATX & STAHL connectors and other cable types and other voltages also available - please contact SA Equip for more details.

You may also need...
Standard LED Worklights 38 & 40
Emergency LED Worklight 42
Transformers 84 & 86
Splitter Boxes 88
Plug, Socket, and Cable guide 16
Product Directory 94 - 104

PRODUCT DIRECTORY

PRODUCT DIRECTORY

HEAT /

HEATER

SA FLEXIHEAT EX Heater 18kW 400-440VAC [+/-10%] 21
3Ph 50/60 Hz c/w 5P 32A CEAG plug and
20m of cable
Order Code: SAPH18440/20HR/CEA32/4P

SA FLEXIHEAT EX Heater 18kW 400-440VAC [+/-10%] 21
3Ph 50/60 Hz c/w 4P 32A CEAG plug and
20m of braided cable
Order Code: SAPH18440/20HR/CEA32/4P

SA FLEXIHEAT EX Heater 18kW 400-440VAC [+/-10%] 21
3Ph 50/60 Hz c/w 5P 32A CEAG plug and
20m of braided cable
Order Code: SAPH18440/20HR/CEA32/5P

SA FLEXIHEAT EX Heater 18kW 400-440VAC [+/-10%] 21
3Ph 50/60 Hz c/w 4P 32A CEAG plug and
20m of braided cable
Order Code: SAPH18440/20HR/CEA63/4P

SA FLEXIHEAT EX Heater 18kW 400-440VAC [+/-10%] 21
3Ph 50/60 Hz c/w 5P 32A CEAG plug and
20m of braided cable
Order Code: SAPH18440/20HR/CEA63/5P

SA FLEXIHEAT EX Heater 18kW 400-440VAC [+/-10%] 21
3Ph 50/60 Hz c/w 4P 32A Stahl plug and
20m of braided cable
Order Code: SAPH18440/20HR/STA32/4P

SA FLEXIHEAT EX Heater 18kW 400-440VAC [+/-10%] 21
3Ph 50/60 Hz c/w 5P 32A Stahl plug and
20m of braided cable
Order Code: SAPH18440/20HR/STA32/5P

SA FLEXIHEAT EX Heater 18kW 400-440VAC [+/-10%] 21
3Ph 50/60 Hz c/w 5P 32A CEAG plug and
35m of cable
Order Code: SAPH18440/35H7E/C32/5P

SA FLEXIHEAT EX Heater 18kW 400-440VAC [+/-10%] 21
3Ph 50/60 Hz c/w 4P 32A Stahl plug and
20m of braided cable
Order Code: SAPH18440/35H7E/STA63/4P

SA FLEXIHEAT EX Heater Protective Cover 21
Order Code: SAPH/PC

SA FLEXIHEAT EX Heater Trolley 21
Order Code: SAPH/WD



HEATING JACKETS

SA FLEXIHEAT EX 400mm Long Heating Jacket 23
110VAC, Linkable 80W 0.96A for use with pipes up to
150mm dia. c/w ATX plug & coupler and braided cable
Order Code: SAFH150P/400C110ATX

SA FLEXIHEAT EX 400mm Long Heating Jacket 23
110VAC, Linkable 80W 0.96A for use with pipes up to
150mm dia. c/w CEAG plug & coupler and braided cable
Order Code: SAFH150P/400C110CEA

SA FLEXIHEAT EX 400mm Long Heating Jacket 23
110VAC, Linkable 80W 0.96A for use with pipes up to
150mm dia. c/w STAHL plug & coupler and braided cable
Order Code: SAFH150P/400C110STA

SA FLEXIHEAT EX 400mm Long Heating Jacket 23
230VAC Linkable 80W 0.46A for use with pipes up to
150mm dia. c/w ATX plug & coupler and braided cable
Order Code: SAFH150P/400C230ATX

SA FLEXIHEAT EX 400mm Long Heating Jacket 23
230VAC Linkable 80W 0.46A for use with pipes up to
150mm dia. c/w CEAG plug & coupler and braided cable
Order Code: SAFH150P/400C230CEA

SA FLEXIHEAT EX 400mm Long Heating Jacket 23
230VAC Linkable 80W 0.46A for use with pipes up to
150mm dia. c/w STAHL plug & coupler and braided cable
Order Code: SAFH150P/400C230STA

SA FLEXIHEAT EX 700mm Long Heating Jacket 23
110VAC Linkable 104W 1.25A for use with pipes up to
150mm dia. c/w ATX plug & coupler and braided cable
Order Code: SAFH150P/700C110ATX

SA FLEXIHEAT EX 700mm Long Heating Jacket 23
110VAC Linkable 104W 1.25A for use with pipes up to
150mm dia. c/w CEAG plug & coupler and braided cable
Order Code: SAFH150P/700C110CEA

SA FLEXIHEAT EX 700mm Long Heating Jacket 23
110VAC Linkable 104W 1.25A for use with pipes up to
150mm dia. c/w STAHL plug & coupler and braided cable
Order Code: SAFH150P/700C110STA

SA FLEXIHEAT EX 700mm Long Heating Jacket 23
230VAC Linkable 104W 0.60A for use with pipes up to
150mm dia. c/w ATX plug & coupler and braided cable
Order Code: SAFH150P/700C230ATX

SA FLEXIHEAT EX 700mm Long Heating Jacket 23
230VAC Linkable 104W 0.60A for use with pipes up to
150mm dia. c/w CEAG plug & coupler and braided cable
Order Code: SAFH150P/700C230CEA

SA FLEXIHEAT EX 700mm Long Heating Jacket 23
230VAC Linkable 104W 0.60A for use with pipes up to
150mm dia. c/w STAHL plug & coupler and braided cable
Order Code: SAFH150P/700C230STA

SA FLEXIHEAT EX 1000mm Long Heating Jacket 23
110VAC Linkable 72W 0.87A for use with pipes up to
50mm dia. c/w ATX plug & coupler and braided cable
Order Code: SAFH050P/1000C110ATX

SA FLEXIHEAT EX 1000mm Long Heating Jacket 23
110VAC Linkable 72W 0.87A for use with pipes up to
50mm dia. c/w CEAG plug & coupler and braided cable
Order Code: SAFH050P/1000C110CEA

SA FLEXIHEAT EX 1000mm Long Heating Jacket 23
110VAC Linkable 72W 0.87A for use with pipes up to
50mm dia. c/w STAHL plug & coupler and braided cable
Order Code: SAFH050P/1000C110STA

SA FLEXIHEAT EX 1000mm Long Heating Jacket 23
230VAC Linkable 72W 0.40A for use with pipes up to
50mm dia. c/w ATX plug & coupler and braided cable
Order Code: SAFH050P/1000C230ATX

SA FLEXIHEAT EX 1000mm Long Heating Jacket 23
230VAC Linkable 72W 0.40A for use with pipes up to
50mm dia. c/w CEAG plug & coupler and braided cable
Order Code: SAFH050P/1000C230CEA

SA FLEXIHEAT EX 1000mm Long Heating Jacket 23
230VAC Linkable 72W 0.40A for use with pipes up to
50mm dia. c/w STAHL plug & coupler and braided cable
Order Code: SAFH050P/1000C230STA

SA FLEXIHEAT EX 110V Temperature Limiter for
Jacket 23
Order Code: SAFH/STM/110CEA

HIGH POWER HEATING JACKETS

SA FLEXIHEAT EX 400mm Long Heating Jacket 25
230VAC Linkable 193W 2.43A for use with pipes up to
150mm dia. c/w CEAG plug & coupler and braided cable
Order Code: SAFH150H/400C230CEA

SA FLEXIHEAT EX 700mm Long Heating Jacket 25
230VAC Linkable 285W 3.60A for use with pipes up to
150mm dia. c/w CEAG plug & coupler and braided cable
Order Code: SAFH150H/700C230CEA

SA FLEXIHEAT EX 1000mm Long Heating Jacket 25
230VAC Linkable 175W 2.20A for use with pipes up to
50mm dia. c/w CEAG plug & coupler and braided cable
Order Code: SAFH050H/1000C230CEA

HEATBOX

SA FLEXIHEAT EX HeatBox 27
Order Code: SAHB/02-AP

PRODUCT DIRECTORY

LIGHT /

LED TORCH

SA LUMIN EX LED Torch c/w light sensor, 31
wrist strap, and 4 x AAA/RO3 6V batteries
Order Code: EX150

SA LUMIN EX LED Rechargeable Torch 31
c/w charger and lanyard
Order Code: EX150C

LED HEADTORCH

SA LUMIN EX LED Headtorch 33
c/w head strap, helmet clips and 3 x AAA batteries
Order Code: EX600

LED TASKLIGHT

SATL100/SG SA LUMIN ATEX LED 35
Tasklight c/w charger offering 15 hours continuous use
c/w charger, mains supply lead
Order Code: SATL100/SG

SA LUMINIATEX LED Tasklight Set 35
c/w 5way charging rack, 5-Way Charging Rack &
Mains Supply Lead
Order Code: SATL100/SG/CR5

SA LUMIN Tasklight Holster 35
enabling hands-free operation of the Tasklight
c/w adjustable strap
Order Code: SATL/HR

SA LUMIN Tasklight Magnetic Bracket 35
c/w anti-static strap and stainless steel
spring-loaded buckle
Order Code: SATL/MB

SA LUMIN Tasklight Stabilising Base Unit 35
Order Code: SATL/BU

SA LUMIN Tasklight Adjustable Floor Stand 35
Order Code: SATL/FS4

SA LUMIN EX LED Tasklight Set of 4 35
c/w 4 way Floor Stand
Order Code: SATL100/FS4

LED TASKLIGHT KIT

SA LUMIN EX LED Tasklight Kit 1 c/w: 37
1 x SA LUMIN EX LED Tasklight,
1 x Leather Holster, 1 x Magnetic Bracket,
1 x Base Unit, 1 x Charger,
1 x Charging Lead 200-250VAC,
1 x Vehicle Charging Lead 12-14VDC,
1 x SA LUMIN EX LED Torch
Order Code: SATL100/KIT1

SA LUMIN EX LED Tasklight Kit 2 c/w: 37
1 x SA LUMIN EX LED Tasklight, §
1 x Leather Holster, 1 x Magnetic Bracket,
1 x Charger, 1 x Charging Lead 200-250VAC,
1 x Vehicle Charging Lead 12-14VDC
Order Code: SATL100/KIT2

LED WORKLIGHT 100

SA LUMIN EX LED Worklight 100 24W 12VAC/DC 39
c/w CEAG 2P plug and 10m of braided cable
Order Code: SA100A12CEA/2P

SA LUMIN EX LED Worklight 100 24W 24V 39
c/w ATX plug & socket and 20m of braided cable
Order Code: SA100A24ATX

SA LUMIN EX LED Worklight 100 24W 24V 39
c/w ATX plug & socket and 20m of braided cable
(INMETRO)
Order Code: SA100A24ATX/BR

SA LUMIN EX LED Worklight 100 24W 24V 39
Linkable c/w ATX plug & socket and 20m of braided cable
Order Code: SA100C24ATX

SA LUMIN EX LED Worklight 100 24W 24V 39
c/w CEAG plug & socket and 20m of braided cable
Order Code: SA100A24CEA

SA LUMIN EX LED Worklight 100 24W 42VAC/DC 39
c/w CEAG 2P plug and 10m of braided cable
Order Code: SA100A42CEA/2P

SA LUMIN EX LED Worklight 100 24W 110V 39
c/w ATX plug & socket and 10m of braided cable
Order Code: SA100A110ATX

SA LUMIN EX LED Worklight 100 24W 110V 39
Linkable c/w ATX plug & socket and 5m of braided cable
Order Code: SA100C110ATX

SA LUMIN EX LED Worklight 100 24W 110V 39
c/w CEAG plug & socket and 10m of braided cable
Order Code: SA100A110CEA

SA LUMIN EX LED Worklight 100 24W 110V 39
Linkable c/w CEAG plug & socket and 5m of braided cable
Order Code: SA100C110CEA

SA LUMIN EX LED Worklight 100 24W 110V 39
c/w STAHL plug & socket and 10m of braided cable
Order Code: SA100A110STA

SA LUMIN EX LED Worklight 100 24W 110V 39
Linkable c/w STAHL plug & socket and 5m of
braided cable
Order Code: SA100C110STA

SA LUMIN EX LED Worklight 100 24W 230V 39
c/w ATX plug & socket and 10m of braided cable
Order Code: SA100A230ATX

SA LUMIN EX LED Worklight 100 24W 230V 39
Linkable c/w ATX plug & socket and 5m of braided cable
Order Code: SA100C230ATX

SA LUMIN EX LED Worklight 100 24W 230V 39
c/w CEAG plug & socket and 10m of braided cable
Order Code: SA100A230CEA

SA LUMIN EX LED Worklight 100 24W 230V 39
Linkable c/w CEAG plug & socket and 5m of braided cable
Order Code: SA100C230CEA

SA LUMIN EX LED Worklight 100 24W 230V 39
c/w STAHL plug & socket and 10m of braided cable
Order Code: SA100A230STA

SA LUMIN EX LED Worklight 100 48W 230V 39
Linkable c/w STAHL plug & socket and
5m of braided cable
Order Code: SA100C230STA

SA LUMIN Worklight Plain Bracket 39
Order Code: SAFB090

SA LUMIN Worklight Magnetic Bracket 39
Order Code: SAFB100

SA LUMIN Worklight Magnetic Swivel Bracket 39
Order Code: SAFB105

SA LUMIN Worklight Scaffold Bracket 39
Order Code: SAFB110

SA LUMIN Worklight Antistatic Protective Film 39
Order Code: SASP113

SA LUMIN Antistatic Protective Bag for Worklight 100 39
(Pack of 50)
Order Code: SAPB100/50

SA LUMIN Worklight Vertical Line Clamp 39
Order Code: SAFB115

SA LUMIN Worklight Tripod Stand 39
Order Code: SAFB150



TO PLACE YOUR ORDER, CALL +44 (0)333 240 6111 ...

... OR EMAIL INFO@SAEQUIP.COM

PRODUCT DIRECTORY

LIGHT /

LED WORKLIGHT 200

| | |
|---|----|
| SA LUMIN EX LED Worklight 200 48W 24V c/w ATX plug & socket and 20m of braided cable Order Code: SA200A24ATX | 41 |
| SA LUMIN EX LED Worklight 200 48W 24V Linkable c/w ATX plug & socket and 20m of braided cable Order Code: SA200C24ATX | 41 |
| SA LUMIN EX LED Worklight 200 48W 24V c/w CEAG plug & socket and 20m of braided cable Order Code: SA200A24CEA | 41 |
| SA LUMIN EX LED Worklight 200 48W 24V c/w STAHL plug & socket and 20m of braided cable Order Code: SA200A25TA | 41 |
| SA LUMIN EX LED Worklight 200 48W 42VAC/DC c/w CEAG plug and braided cable Order Code: SA200A42CEA | 41 |
| SA LUMIN EX LED Worklight 200 48W 110V c/w ATX plug & socket and 10m of braided cable Order Code: SA200A110ATX | 41 |
| SA LUMIN EX LED Worklight 200 48W 110V Linkable c/w ATX plug & socket and 5m of braided cable Order Code: SA200C110ATX | 41 |
| SA LUMIN EX LED Worklight 200 48W 110V c/w CEAG plug & socket and 10m of braided cable Order Code: SA200A110CEA | 41 |
| SA LUMIN EX LED Worklight 200 48W 110V Linkable c/w CEAG plug & socket and 5m of braided cable Order Code: SA200C110CEA | 41 |
| SA LUMIN EX LED Worklight 200 48W 110V c/w STAHL plug & socket and 10m of braided cable Order Code: SA200A110STA | 41 |
| SA LUMIN EX LED Worklight 200 48W 110V Linkable c/w STAHL plug & socket and 5m of braided cable Order Code: SA200C110STA | 41 |
| SA LUMIN EX LED Worklight 200 48W 230V c/w ATX plug & socket and 10m of braided cable Order Code: SA200A230ATX | 41 |
| SA LUMIN EX LED Worklight 200 48W 230V c/w CEAG plug & socket and 10m of braided cable Order Code: SA200A230CEA | 41 |
| SA LUMIN EX LED Worklight 200 48W 230V Linkable c/w CEAG plug & socket and 5m of braided cable Order Code: SA200C230CEA | 41 |

| | |
|---|----|
| SA LUMIN EX LED Worklight 200 48W 230V c/w STAHL plug & socket and 5m of braided cable Order Code: SA200C230STA | 41 |
| SA LUMIN EX LED Worklight 200 48W 230V c/w STAHL plug & socket and 10m of braided cable Order Code: SA200A230STA | 41 |
| SA LUMIN Worklight Plain Bracket Order Code: SAFB090 | 41 |
| SA LUMIN Worklight Magnetic Bracket Order Code: SAFB100 | 41 |
| SA LUMIN Worklight Magnetic Swivel Bracket Order Code: SAFB105 | 41 |
| SA LUMIN Worklight Scaffold Bracket Order Code: SAFB110 | 41 |
| SA LUMIN Worklight Antistatic Protective Film Order Code: SASP114 | 41 |
| SA LUMIN Worklight Tripod Stand Order Code: SAFB150 | 41 |

LED EMERGENCY WORKLIGHT

| | |
|--|----|
| SA LUMIN EX LED Emergency Worklight 32W 110V Linkable c/w ATX plug & socket and 5m of braided cable Order Code: SAE100C110ATX | 43 |
| SA LUMIN EX LED Emergency Worklight 32W 110V Linkable c/w CEAG plug & socket and 5m of braided cable Order Code: SAE100C110CEA | 43 |
| SA LUMIN EX LED Emergency Worklight 32W 110V Linkable c/w STAHL plug & socket and 5m of braided cable Order Code: SAE100C110STA | 43 |
| SA LUMIN EX LED Emergency Worklight 32W 230V Linkable c/w ATX plug & socket and 5m of braided cable Order Code: SAE100C230ATX | 43 |
| SA LUMIN EX LED Emergency Worklight 32W 230V Linkable c/w CEAG plug & socket and 5m of braided cable Order Code: SAE100C230CEA | 43 |
| SA LUMIN EX LED Emergency Worklight 32W 230V Linkable c/w STAHL plug & socket and 5m of H07RN-F cable Order Code: SAE100C230STA | 43 |

| | |
|---|----|
| SA LUMIN Worklight Plain Bracket Order Code: SAFB090 | 43 |
| SA LUMIN Worklight Magnetic Bracket Order Code: SAFB100 | 43 |
| SA LUMIN Worklight Magnetic Swivel Bracket Order Code: SAFB105 | 43 |
| SA LUMIN Worklight Scaffold Bracket Order Code: SAFB110 | 43 |
| SA LUMIN Worklight Antistatic Protective Film Order Code: SASP114 | 43 |
| SA LUMIN Antistatic Protective Bag for Worklight 200 (Pack of 50) Order Code: SAPB200/50 | 43 |
| SA LUMIN Worklight Vertical Line Clamp Order Code: SAFB115 | 43 |
| SA LUMIN Worklight Tripod Stand Order Code: SAFB150 | 43 |

LED FLOODLIGHT

| | |
|---|----|
| SA LUMIN EX LED Floodlight 68W 24VAC/DC c/w ATX plug and 20m of braided cable Order Code: SAFL300A24ATX | 45 |
| SA LUMIN EX LED Floodlight 68W 24VAC/DC c/w ATX plug and 20m of braided cable (INMETRO) Order Code: SAFL300A24ATX/BR | 45 |
| SA LUMIN EX LED Floodlight 68W 24VAC/DC Linkable, c/w ATX plug & socket and 5m of braided cable Order Code: SAFL300C24ATX | 45 |
| SA LUMIN EX LED Floodlight 68W 24VAC/DC c/w CEAG plug and 10m of H07RN-F cable Order Code: SAFL300A24CEA | 45 |
| SA LUMIN EX LED Floodlight 68W 24VAC/DC Linkable, c/w CEAG plug & socket and 5m of braided cable Order Code: SAFL300C24CEA | 45 |
| SA LUMIN EX LED Floodlight 68W 24VAC/DC c/w STAHL plug and 20m of braided cable Order Code: SAFL300A24STA | 45 |
| SA LUMIN EX LED Floodlight 68W 42VAC c/w CEAG plug and braided cable Order Code: SAFL300A42CEA | 45 |
| SA LUMIN EX LED Floodlight 68W 110VAC c/w ATX plug and 10m of braided cable Order Code: SAFL300A110ATX | 45 |

PRODUCT DIRECTORY

| | |
|--|----|
| SA LUMIN EX LED Floodlight 68W 110VAC Linkable, c/w ATX plug & socket and 5m of braided cable Order Code: SAFL300C110ATX | 45 |
| SA LUMIN EX LED Floodlight 68W 110VAC c/w CEAG plug and 10m of braided cable Order Code: SAFL300A110CEA | 45 |
| SA LUMIN EX LED Floodlight 68W 110VAC Linkable, c/w CEAG plug & socket and 5m of braided cable Order Code: SAFL300C110CEA | 45 |
| SA LUMIN EX LED Floodlight 68W 110VAC c/w STAHL plug and 10m of braided cable Order Code: SAFL300A110STA | 45 |
| SA LUMIN EX LED Floodlight 68W 110VAC Linkable c/w STAHL plug & coupler Order Code: SAFL300B110STA | 45 |
| SA LUMIN EX LED Floodlight 68W 230VAC c/w ATX plug and 10m of braided cable Order Code: SAFL300A230ATX | 45 |
| SA LUMIN EX LED Floodlight 68W 230VAC c/w ATX plug and 10m of braided cable (INMETRO) Order Code: SAFL300A230CEA/BR | 45 |
| SA LUMIN EX LED Floodlight 68W 230VAC Linkable, c/w ATX plug & socket and 5m of braided cable Order Code: SAFL300C230ATX | 45 |
| SA LUMIN EX LED Floodlight 68W 230VAC c/w CEAG plug and 10m of braided cable Order Code: SAFL300A230CEA | 45 |
| SA LUMIN EX LED Floodlight 68W 230VAC Linkable, c/w CEAG plug & socket and 5m of braided cable Order Code: SAFL300C230CEA | 45 |
| SA LUMIN EX LED Floodlight 68W 230VAC c/w STAHL plug and 10m of braided cable Order Code: SAFL300A230STA | 45 |
| SA LUMIN Floodlight Scaffold Bracket Order Code: SAFL/SB | 45 |
| SA LUMIN Floodlight Protective Shield Order Code: SAFL/PS | 45 |
| SA LUMIN Floodlight Protective Film Order Code: SAFL/PF | 45 |
| SA LUMIN Floodlight Tripod Stand Order Code: SAFL/TS | 45 |
| SA LUMIN Floodlight Magnetic Brackets Order Code: SAFL/MB | 45 |

LED RECHARGEABLE FLOODLIGHT

| | |
|---|----|
| SA LUMIN EX LED Rechargeable Floodlight c/w Mains Charger Order Code: SARF300 | 47 |
| SA LUMIN EX LED Rechargeable Floodlight c/w Mains Charger (INMETRO) Order Code: SARF300/BR | 47 |
| SA LUMIN EX LED Rechargeable Floodlight (AU plug) Order Code: SARF300-AU | 47 |
| SA LUMIN EX LED Rechargeable Floodlight Kit c/w accessories Order Code: SARF300/KIT1 | 47 |
| SA LUMIN Floodlight Scaffold Bracket Order Code: SAFL/SB | 47 |
| SA LUMIN Floodlight Magnetic Bracket Order Code: SAFL/MB | 47 |
| SA LUMIN Floodlight Protective Shield Order Code: SAFL/PS | 47 |
| SA LUMIN Floodlight Protective Film Order Code: SAFL/PF | 47 |
| SA LUMIN Floodlight Tripod Stand Order Code: SAFL/TS | 47 |
| Protective Case for SA LUMIN EX LED Rechargeable Floodlight Order Code: SARF/PBX | 47 |

LED AREA LIGHT

| | |
|--|----|
| SA LUMIN EX LED Area Light 110V c/w with CEAG plug and 20m of braided cable Order Code: SAAL25-110/FR/CEA/20HRE | 49 |
| SA LUMIN EX LED Area Light 230V c/w CEAG plug and 20m of braided cable Order Code: SAAL25-230/FR/CEA/20HRE | 49 |

LED TOWER LIGHT

| | |
|--|----|
| SA LUMIN EX LED Tower Light 110V c/w ATX plug and 20m of H07RN cable Order Code: SAAL25-110/TW/ATX/20H7E | 51 |
| SA LUMIN EX LED Tower Light 110V c/w CEAG plug and 20m of braided cable Order Code: SAAL25-110/TW/CEA/20HRE | 51 |

| | |
|---|----|
| SA LUMIN EX LED Tower Light 110V c/w CEAG plug and 20m of braided cable (Suitable for use in IIB + H2 area) Order Code: SAAL25H2-110/TW/CEA/20HRE | 51 |
| SA LUMIN EX LED Tower Light 230V c/w CEAG plug and 20m of braided cable Order Code: SAAL25-230/TW/CEA/20HRE | 51 |
| SA LUMIN EX LED Tower Light 230V c/w CEAG plug and 20m of braided cable (Turtle Friendly) Order Code: SAAL25WF-230/TW/CEA/20HRE | 51 |
| SA LUMIN EX LED Tower Light Trolley Order Code: SAAL/TR | 51 |

VESSEL ENTRY KITS

| | |
|--|----|
| SA Vessel Entry Kit 110-24V 4 x SA100 Worklight (HOFR cable) Order Code: SAVK100/244-110/CEA | 53 |
| SA Vessel Entry Kit 230-24V 4 x SA100 Worklight (HOFR cable) Order Code: SAVK100/244-230/CEA | 53 |
| SA Vessel Entry Kit 110-24V 4 x SA200 Worklight (HOFR cable) Order Code: SAVK200/244-110/CEA | 53 |
| SA Vessel Entry Kit 230-24V 4 x SA200 Worklight (HOFR cable) Order Code: SAVK200/244-230/CEA | 53 |
| SA Vessel Entry Kit 110-24V 4 x SAFL300 Floodlight Order Code: SAVK300F/244-110/CEA | 53 |
| SA Vessel Entry Kit 230-24V 4 x SAFL300 Floodlight Order Code: SAVK300F/244-230/CEA | 53 |
| SA Vessel Entry Kit 110-24V 4 x SAFL200 Compact Floodlight Order Code: SAVK200F/244-110/CEA | 53 |
| SA Vessel Entry Kit 230-24V 4 x SAFL200 Compact Floodlight Order Code: SAVK200F/244-230/CEA | 53 |
| SA Vessel Entry Kit 230-24V 2 x SA200 Worklight, 2 x SAFL300 Floodlight Order Code: SAVK2200L2300F/244-110CEA | 53 |
| SA Vessel Entry Kit 230-24V 2 x SA200 Worklight, 2 x SAFL300 Floodlight Order Code: SAVK2200L2300F/244-230CEA | 53 |

TO PLACE YOUR ORDER, CALL +44 (0)333 240 6111 ...

... OR EMAIL INFO@SAEQUIP.COM

AIR /

AIR MOVER

| | |
|---|----|
| SA CYCLONE EX Air Mover 110V c/w ATX plug and 10m of braided cable Order Code: SAF35/110-00/ATX/10HRE | 57 |
| SA CYCLONE EX Air Mover 110V c/w CEAG plug and 10m of braided cable Order Code: SAF35/110-00/CEA/10HRE | 57 |
| SA CYCLONE EX Air Mover 110V c/w STAHL plug and 10m of braided cable Order Code: SAF35/110-00/STA/10HRE | 57 |
| SA CYCLONE EX Air Mover 110V c/w 30cm adaptors, ATX plug and 10m braided cable Order Code: SAF35/110-30/ATX/10HRE | 57 |
| SA CYCLONE EX Air Mover 110V c/w 30cm adaptors, CEAG plug and 10m of braided cable Order Code: SAF35/110-30/CEA/10HRE | 57 |
| SA CYCLONE EX Air Mover 110V c/w 30cm adaptors, STAHL plug and 10m of braided cable Order Code: SAF35/110-30/STA/10HRE | 57 |
| SA CYCLONE EX Air Mover 110V c/w 40cm adaptors, ATX plug and 10m of braided cable Order Code: SAF35/110-40/ATX/10HRE | 57 |
| SA CYCLONE EX Air Mover 110V c/w 40cm adaptors, CEAG plug and 10m of braided cable Order Code: SAF35/110-40/CEA/10HRE | 57 |
| SA CYCLONE EX Air Mover 110V c/w 40cm adaptors, STAHL plug and 10m of braided cable Order Code: SAF35/110-40/STA/10HRE | 57 |
| SA CYCLONE EX Air Mover 230V c/w ATX plug and 10m of braided cable Order Code: SAF35/230-00/ATX/10HRE | 57 |
| SA CYCLONE EX Air Mover 230V c/w CEAG plug and 10m of braided cable Order Code: SAF35/230-00/CEA/10HRE | 57 |
| SA CYCLONE EX Air Mover 230V c/w STAHL plug and 10m of braided cable Order Code: SAF35/230-00/STA/10HRE | 57 |
| SA CYCLONE EX Air Mover 230V c/w 30cm adaptors, ATX plug and 10m braided cable Order Code: SAF35/230-30/ATX/10HRE | 57 |
| SA CYCLONE EX Air Mover 230V c/w 30cm adaptors, CEAG plug and 10m of braided cable Order Code: SAF35/230-30/CEA/10HRE | 57 |
| SA CYCLONE EX Air Mover 230V c/w 30cm adaptors, STAHL plug and 10m of braided cable Order Code: SAF35/230-30/STA/10HRE | 57 |
| SA CYCLONE EX Air Mover 230V c/w 40cm duct connectors with HEPA/Bacterial Filter Set Order Code: SAFU/40-WD | 59 |

| | |
|---|----|
| SA CYCLONE EX Air Mover 230V c/w 30cm adaptors, CEAG plug and 10m of braided cable (INMETRO) Order Code: SAF35/230-30/CEA/10HRE/BR | 57 |
| SA CYCLONE EX Air Mover 230V c/w 30cm adaptors, STAHL plug and 10m of braided cable Order Code: SAF35/230-30/STA/10HRE | 57 |
| SA CYCLONE EX Air Mover 230V c/w 40cm adaptors, ATX plug and 10m of braided cable Order Code: SAF35/230-40/ATX/10HRE | 57 |
| SA CYCLONE EX Air Mover 230V c/w 40cm adaptors, CEAG plug and 10m of braided cable Order Code: SAF35/230-40/CEA/10HRE | 57 |
| SA CYCLONE EX Air Mover 230V c/w 40cm adaptors, STAHL plug and 10m of braided cable Order Code: SAF35/230-40/STA/10HRE/BR | 57 |
| SA CYCLONE EX Air Mover 230V c/w 40cm adaptors, CEAG plug and 10m of braided cable Order Code: SAF35/230-40/CEA/10HRE | 57 |
| SA CYCLONE EX Air Mover 230V c/w 40cm adaptors, STAHL plug and 10m of braided cable Order Code: SAF35/230-40/STA/10HRE | 57 |
| SA CYCLONE EX Air Mover 230V c/w 40cm adaptors, CEAG plug and 10m of braided cable Order Code: SAF35/230-40/CEA/10HRE | 57 |
| SA CYCLONE EX Air Mover 230V c/w 40cm adaptors, STAHL plug and 10m of braided cable Order Code: SAF35/230-40/STA/10HRE | 57 |
| 30cm Duct Adaptor for SA CYCLONE Ex Air Mover c/w fasteners Order Code: SAF35-DA30 | 57 |
| 40cm Duct Adaptor for SA CYCLONE Ex Air Mover c/w fasteners Order Code: SAF35-DA40 | 57 |
| FILTRATION UNIT | |
| SA CYCLONE FILTRATION UNIT c/w 30cm duct connectors with Welding Filter Set Order Code: SAFU/30-WD | 59 |
| SA CYCLONE FILTRATION UNIT c/w 30cm duct connectors with Dust Filter Set Order Code: SAFU/30-DU | 59 |
| SA CYCLONE FILTRATION UNIT c/w 30cm duct connectors with Paint Filter Set Order Code: SAFU/30-PT | 59 |
| SA CYCLONE FILTRATION UNIT c/w 30cm duct connectors with HEPA/Bacterial Filter Set Order Code: SAFU/30-HP | 59 |
| SA CYCLONE FILTRATION UNIT c/w 40cm duct connectors with Welding Filter Set Order Code: SAFU/40-WD | 59 |

| | |
|---|----|
| SA CYCLONE FILTRATION UNIT c/w 40cm duct connectors with Dust Filter Set Order Code: SAFU/40-DU | 59 |
| SA CYCLONE FILTRATION UNIT c/w 40cm duct connectors with Paint Filter Set Order Code: SAFU/40-PT | 59 |
| SA CYCLONE FILTRATION UNIT c/w 40cm duct connectors with HEPA/Bacterial Filter Set Order Code: SAFU/40-HP | 59 |
| COMPACT FILTRATION UNIT | |
| SA CYCLONE COMPACT FILTRATION UNIT c/w 20cm duct adaptors With Dust Filter Set Order Code: SACFU/20-DU/FI | 61 |
| With Welding Filter Set Order Code: SACFU/20-WD/FI | 61 |
| With HEPA/Bacterial Filter Set Order Code: SACFU/20-HP/FI | 61 |
| SA CYCLONE COMPACT FILTRATION UNIT c/w 30cm duct adaptors With Dust Filter Set Order Code: SACFU/30-DU/FI | 61 |
| With Welding Filter Set Order Code: SACFU/30-WD/FI | 61 |
| With HEPA/Bacterial Filter Set Order Code: SACFU/30-HP/FI | 61 |
| NEGATIVE PRESSURE UNIT | |
| SA CYCLONE Negative Pressure Unit-Asbestos c/w 30cm connector Order Code: SANPU/30-AB | 63 |
| SA CYCLONE Negative Pressure Unit-Asbestos c/w 40cm connector Order Code: SANPU/40-AB | 63 |
| SA CYCLONE Roving Head c/w 5m Ducting -Asbestos Order Code: SANPU/RH | 63 |



ANTI-STATIC REINFORCED DUCTING

| | |
|---|----|
| SA CYCLONE Antistatic Ducting 10cmØ x 5m Single Strap Order Code: SAFD10/05-EX/1S | 65 |
| SA CYCLONE Antistatic Ducting 10cmØ x 5m Double Strap Order Code: SAFD10/05-EX/2S | 65 |
| SA CYCLONE Antistatic Ducting 10cmØ x 10m Single Strap Order Code: SAFD10/10-EX/1S | 65 |
| SA CYCLONE Antistatic Ducting 10cmØ x 10m Double Strap Order Code: SAFD10/10-EX/2S | 65 |
| SA CYCLONE Antistatic Ducting 20cmØ x 5m Single Strap Order Code: SAFD20/05-EX/1S | 65 |
| SA CYCLONE Antistatic Ducting 20cmØ x 5m Double Strap Order Code: SAFD20/05-EX/2S | 65 |
| SA CYCLONE Antistatic Ducting 20cmØ x 10m Single Strap Order Code: SAFD20/10-EX/1S | 65 |
| SA CYCLONE Antistatic Ducting 20cmØ x 10m Double Strap Order Code: SAFD20/10-EX/2S | 65 |
| SA CYCLONE Antistatic Ducting 30cmØ x 5m Single Strap Order Code: SAFD30/05-EX/1S | 65 |
| SA CYCLONE Antistatic Ducting 30cmØ x 5m Double Strap Order Code: SAFD30/05-EX/2S | 65 |
| SA CYCLONE Antistatic Ducting 30cmØ x 10m Single Strap Order Code: SAFD30/10-EX/1S | 65 |
| SA CYCLONE Antistatic Ducting 30cmØ x 10m Double Strap Order Code: SAFD30/10-EX/2S | 65 |
| SA CYCLONE Antistatic Ducting 40cmØ x 5m Single Strap Order Code: SAFD40/05-EX/1S | 65 |
| SA CYCLONE Antistatic Ducting 40cmØ x 5m Double Strap Order Code: SAFD40/05-EX/2S | 65 |
| SA CYCLONE Antistatic Ducting 40cmØ x 10m Single Strap Order Code: SAFD40/10-EX/1S | 65 |

| | |
|---|----|
| SA CYCLONE Antistatic Ducting 40cmØ x 10m Double Strap Order Code: SAFD40/10-EX/2S | 65 |
| SA CYCLONE Straight Duct Coupler 20cmØ Order Code: SAFD20/CU | 65 |
| SA CYCLONE Straight Duct Coupler 30cmØ Order Code: SAFD30/CU | 65 |
| SA CYCLONE Straight Duct Coupler 40cmØ Order Code: SAFD40/CU | 65 |
| SA CYCLONE Y-Coupler 20cmØ Order Code: SAFD20/YC | 65 |
| SA CYCLONE Y-Coupler 30cmØ Order Code: SAFD30/YC | 65 |
| SA CYCLONE Y-Coupler 40cmØ Order Code: SAFD40/YC | 65 |
| ANTI-STATIC LAYFLAT DUCTING | |
| SA CYCLONE Anti-static Layflat Ducting 10cm diameter 10m long, dual strap Order Code: SAFD10LF/10-EX | 67 |
| SA CYCLONE Anti-static Layflat Ducting 0cm diameter 10m long, dual strap Order Code: SAFD20LF/10-EX | 67 |
| SA CYCLONE Anti-static Layflat Ducting 30cm diameter 10m long, dual strap Order Code: SAFD30LF/10-EX | 67 |
| SA CYCLONE Anti-static Layflat Ducting 40cm diameter 10m long, dual strap Order Code: SAFD40LF/10-EX | 67 |
| DUCTING CONNECTORS | |
| SA CYCLONE Duct Coupler 10cm diameter Order Code: SAFD10/CU | 69 |
| SA CYCLONE Duct Coupler 20cm diameter Order Code: SAFD20/CU | 69 |
| SA CYCLONE Duct Coupler 30cm diameter Order Code: SAFD30/CU | 69 |
| SA CYCLONE Duct Coupler 40cm diameter Order Code: SAFD40/CU | 69 |

| | |
|--|----|
| SA CYCLONE Duct Y Coupler 10cm diameter Order Code: SAFD10/YC | 69 |
| SA CYCLONE Duct Y Coupler 20cm diameter Order Code: SAFD20/YC | 69 |
| SA CYCLONE Duct Y Coupler 30cm diameter Order Code: SAFD30/YC | 69 |
| SA CYCLONE Duct Y Coupler 40cm diameter Order Code: SAFD40/YC | 69 |
| SA CYCLONE Duct Coupler/Reducer 20cm to 10cm diameter Order Code: SAFD2010/CUR | 69 |
| SA CYCLONE Duct Coupler/Reducer 30cm to 10cm diameter Order Code: SAFD3010/CUR | 69 |
| SA CYCLONE Duct Coupler/Reducer 30cm to 20cm diameter Order Code: SAFD3020/CUR | 69 |
| SA CYCLONE Duct Y Coupler/Reducer 20cm to 2x10cm diameter Order Code: SAFD20/YC | 69 |
| SA CYCLONE Duct Y Coupler/Reducer 30cm to 2x10cm diameter Order Code: SAFD30/YC | 69 |
| SA CYCLONE Duct Y Coupler/Reducer 30cm to 2x20cm diameter Order Code: SAFD30/20/YC | 69 |
| SA CYCLONE Duct Y Coupler/Reducer 40cm to 2x20cm diameter Order Code: SAFD40/20/YC | 69 |
| SA CYCLONE Duct Y Coupler/Reducer (Air Mover to Duct) Air Mover to 20cm diameter Order Code: SAFD3020/DA | 69 |
| SA CYCLONE Duct Y Coupler/Reducer (Air Mover to Duct) Air Mover to 4x10cm diameter Order Code: SAFD40/10/AM | 69 |



TO PLACE YOUR ORDER, CALL +44 (0)333 240 6111 ...

... OR EMAIL INFO@SAEQUIP.COM

PRODUCT DIRECTORY

AIR

EXTRACTION HOOD

| | |
|---|----|
| SA CYCLONE Extraction Hood 20cm diameter 50x50cm Order Code: SAFD20/H5050/AHFM | 71 |
| SA CYCLONE Extraction Hood 30cm diameter 60x60cm Order Code: SAFD30/H6060/AHFM | 71 |
| SA CYCLONE Extraction Hood 40cm diameter 70x70cm Order Code: SAFD40/H7070/AHFM | 71 |

FUEL TANK ADAPTOR FLANGE

| | |
|--|----|
| SA CYCLONE Fuel Tank Adaptor Flange 10cm Order code: SAFD10/FTF/400700 | 73 |
| SA CYCLONE Fuel Tank Adaptor Flange 20cm Order Code: SAFD20/FTF/400700 | 73 |

AIR MOVER & AREA LIGHT TROLLEY

| | |
|--|----|
| SA CYCLONE Air Mover Trolley Order code: SAAF/TR01 | 75 |
|--|----|

MANWAY DUCTING ADAPTORS

| | |
|---|----|
| SA CYCLONE Manway Adaptor 20cm diameter Small door, flange details as specified Order Code: SAFD20/MW01/***** | 77 |
| SA CYCLONE Manway Adaptor 30cm diameter Small door, flange details as specified Order Code: SAFD30/MW01/***** | 77 |
| SA CYCLONE Manway Adaptor 40cm diameter Small door, flange details as specified Order Code: SAFD40/MW01/***** | 77 |
| SA CYCLONE Manway Adaptor 20cm diameter Medium door, flange details as specified Order Code: SAFD20/MW02/***** | 77 |
| SA CYCLONE Manway Adaptor 30cm diameter Medium door, flange details as specified Order Code: SAFD30/MW02/***** | 77 |
| SA CYCLONE Manway Adaptor 40cm diameter Medium door, flange details as specified Order Code: SAFD40/MW02/***** | 77 |



| | |
|--|----|
| SA CYCLONE Manway Adaptor 20cm diameter Large door, flange details as specified Order Code: SAFD20/MW03/***** | 77 |
| SA CYCLONE Manway Adaptor 30cm diameter Large door, flange details as specified Order Code: SAFD30/MW03/***** | 77 |
| SA CYCLONE Manway Adaptor 40cm diameter Large door, flange details as specified Order Code: SAFD40/MW03/***** | 77 |

VENTURI AIR MOVER

| | |
|---|----|
| SA CYCLONE Venturi Air Mover 13cm (3" flange) Order Code: SAV13/AP | 79 |
| SA CYCLONE Venturi Air Mover 20cm (3" flange) Order Code: SAV20/AP | 79 |
| SA CYCLONE Venturi Air Mover 30cm (6" flange) Order Code: SAV30/AP | 79 |
| SA CYCLONE Venturi Air Mover 30cm (6" flange) c/w 30cm Duct Adaptor Order Code: SAV30/DA30 | 79 |

POWER

MAINS DISTRIBUTION UNIT

| | |
|---|----|
| SA POWERNET EX MDU 400V 2-way c/w CEAG plug, 2 x 32A 4P CEAG sockets, and 5m of braided cable Order Code: PNDU440/05-2EX/CEA | 83 |
| SA POWERNET EX MDU 400V 2-way c/w CEAG plug, 2 x 32A 4P CEAG sockets, and 10m of braided cable Order Code: PNDU440/10-2EX/CEA | 83 |
| SA POWERNET EX MDU 400V 2-way c/w 5P CEAG plug, 2 x 32A 5P CEAG sockets, and 10m of braided cable Order Code: PNDU440/10-2EX/CEA/5P | 83 |
| SA POWERNET EX MDU 400V 2-way c/w CEAG plug, 2 x 32A 4P CEAG sockets, and 15m of braided cable Order Code: PNDU440/15-2EX/CEA | 83 |
| SA POWERNET EX MDU 400V 2-way c/w CEAG plug, 2 x 32A 4P CEAG sockets, and 20m of braided cable Order Code: PNDU440/20-2EX/CEA | 83 |
| SA POWERNET EX MDU 400V 3-way c/w CEAG plug, 1 x 32A 4P & 2 x 16A 4P CEAG sockets, and 10m of braided cable Order Code: PNDU440/10-12EX/CEA | 83 |
| SA POWERNET EX MDU 400V 4-way c/w CEAG plug, 4 x 16A 4P CEAG sockets, and 10m of braided cable Order Code: PNDU440/10-4EX/CEA | 83 |

3.8KVA TRANSFORMER

| | |
|---|----|
| SA POWERNET EX 3.8kVA Transformer 4-way 230V-110V CTE c/w 1 x 230V 16A 3P CEAG plug, 4 x 110V 16A CEAG sockets and 10m of braided cable Order Code: PNLT230110C/10HR/C16/3P | 85 |
| SA POWERNET EX 3.8kVA Transformer 4-way 230V-110V CTE c/w 1 x 230V 16A 3P CEAG plug, 4 x 110V 16A CEAG sockets and 20m of braided cable Order Code: PNLT230110C/20HR/C16/3P | 85 |
| SA POWERNET EX 3.8kVA Transformer 4-way 230V-110V CTE c/w 1 x 230V 16A 3P STAHL plug, 4 x 110V 16A STAHL sockets and 10m of braided cable Order Code: PNLT230110S/10HR/S16/3P | 85 |
| SA POWERNET EX 3.8kVA Transformer 4-way 440V-110V CTE c/w 1 x 440V 16A 4P CEAG plug, 4 x 110V 16A CEAG sockets and 10m of braided cable Order Code: PNLT440110C/10HR/C16/4P | 85 |

PRODUCT DIRECTORY

| | |
|--|----|
| SA POWERNET EX 3.8kVA Transformer 4-way 440V-110V CTE c/w 1 x 440V 32A 4P CEAG plug, 4 x 110V 16A CEAG sockets and 10m of braided cable Order Code: PNLT440110C/10HR/C32/4P SA | 85 |
| SA POWERNET EX 3.8kVA Transformer 4-way 440V-110V CTE c/w 1 x 440V 32A 5P CEAG plug, 4 x 110V 16A CEAG sockets and 10m of braided cable Order Code: PNLT440110C/10HR/C32/5P | 85 |
| SA POWERNET EX 3.8kVA Transformer 4-way 440V-110V CTE c/w 1 x 440V 64A 4P CEAG plug, 4 x 110V 16A CEAG sockets and 10m of braided cable Order Code: PNLT440110C/10HR/C64/4P | 85 |
| SA POWERNET EX 3.8kVA Transformer 4-way 440V-110V CTE c/w 1 x 440V 64A 5P CEAG plug, 4 x 110V 16A CEAG sockets and 10m of braided cable Order Code: PNLT440110C/10HR/C64/5P | 85 |
| SA POWERNET EX 3.8kVA Transformer 4-way 440V-230V c/w 1 x 440V 32A 5P CEAG plug, 4 x 230V 16A CEAG sockets and 10m of braided cable Order Code: PNLT440230C/10HR/C32/5P | 85 |
| SA POWERNET EX 3.8kVA Transformer 4-way 440V-230V c/w 1 x 440V 64A 4P CEAG plug, 4 x 230V 16A CEAG sockets and 10m of braided cable Order Code: PNLT440230C/10HR/C64/4P | 85 |
| SA POWERNET EX 3.8kVA Transformer 4-way 440V-230V c/w 1 x 440V 64A 4P CEAG plug, 4 x 230V 16A CEAG sockets and 30m of braided cable Order Code: PNLT440230C/30HR/C64/4P | 85 |

400VA TRANSFORMER

| | |
|---|----|
| SA POWERNET EX Transformer 4-way 110-24V 400VA c/w 1 x 16A ATX plug, 4 x ATX Sockets and 15m of braided cable Order Code: TRA11024/400-4EX/ATX | 87 |
| SA POWERNET EX Transformer 4-way 110-24V 400VA c/w 1 x 16A CEAG plug, 4 x ATX Sockets and 15m of braided cable Order Code: TRA11024/400-4EX/CEA | 87 |
| SA POWERNET EX Transformer 4-way 230-12V 400VA c/w 1 x 16A CEAG plug, 4 x CEAG 2P Sockets and 15m of braided cable Order Code: TRA23012/C400/2P/CEA | 87 |
| SA POWERNET EX Transformer 4-way 230-24V 400VA c/w 1 x 16A ATX plug, 4 x ATX Sockets and 15m of braided cable Order Code: TRA23024/400-4EX/ATX | 87 |

| | |
|---|----|
| SA POWERNET EX Transformer 4-way 230-24V 400VA c/w 1 x 16A ATX plug, 4 x ATX Sockets and 15m of braided cable (INMETRO) Order Code: TRA23024/400-4EX/ATX/BR | 87 |
| SA POWERNET EX Transformer 4-way 230-24V 400VA c/w 1 x 16A CEAG plug, 4 x CEAG Sockets and 15m of braided cable Order Code: TRA23024/C400-4EX/CEA | 87 |
| SA POWERNET EX Transformer CTE 4-way 230-110V 400VA c/w 1 x 16A CEAG plug, 4 x CEAG Sockets and 15m of braided cable Order Code: TRAC230110/C400-4EX/CEA | 87 |
| SA POWERNET EX Transformer CTE 4-way 400-110V 400VA c/w 1 x 16A CEAG plug, 4 x ATX Sockets and 15m of braided cable Order Code: TRAC400110/400-4EX/CEA16 | 87 |

SPLITTER BOX

| | |
|--|----|
| SA POWERNET EX Splitter Box 4-way 24V c/w 1 x 16A ATX plug, 4 x ATX sockets, and 15m of braided cable Order Code: PNSB24/15-4EX/ATX | 89 |
| SA POWERNET EX Splitter Box 4-way 24V c/w 1 x 16A ATX plug, 4 x ATX sockets, and 15m of braided cable (INMETRO) Order Code: PNSB24/15-4EX/ATX/BR | 89 |
| SA POWERNET EX Splitter Box 4-way 24V c/w 1 x 16A CEAG plug, 4 x CEAG sockets, and 15m of braided cable Order Code: PNSB24/15-4EX/CEA | 89 |
| SA POWERNET EX Splitter Box 4-way 110V c/w 1 x 16A ATX plug, 4 x ATX sockets, and 15m of braided cable Order Code: PNSB110/15-4EX/ATX | 89 |
| SA POWERNET EX Splitter Box 4-way 110V c/w 1 x 16A CEAG plug, 4 x CEAG sockets, and 15m of braided cable Order Code: PNSB110/15-4EX/CEA | 89 |
| SA POWERNET EX Splitter Box 4-way 110V c/w 1 x 16A STAHL plug, 4 x STAHL sockets, and 15m of braided cable Order Code: PNSB110/15-4EX/STA | 89 |
| SA POWERNET EX Splitter Box 4-way 230V c/w 1 x 16A ATX plug, 4 x ATX sockets, and 15m of braided cable Order Code: PNSB230/15-4EX/ATX | 89 |

| | |
|--|----|
| SA POWERNET EX Splitter Box 4-way 230V c/w 1 x 16A ATX plug, 4 x ATX sockets, and 15m of braided cable (INMETRO) Order Code: PNSB230/15-4EX/ATX/BR | 89 |
| SA POWERNET EX Splitter Box 4-way 230V c/w 1 x 16A CEAG plug, 4 x CEAG sockets, and 15m of braided cable Order Code: PNSB230/15-4EX/CEA | 89 |
| SA POWERNET EX Splitter Box 4-way 230V c/w 1 x 16A STAHL plug, 4 x STAHL sockets, and 15m of braided cable Order Code: PNSB230/15-4EX/STA | 89 |

EXTENSION REEL

| | |
|--|----|
| SA POWERNET EX Extension Reel 110V c/w 16A ATX plug, 1 x 16A ATX socket 25m of braided cable Order Code: PNER110EX/25HRE/ATX | 91 |
| SA POWERNET EX Extension Reel 110V c/w 16A CEAG plug, 1 x 16A CEAG socket 25m of braided cable Order Code: PNER110EX/25HRE/CEA | 91 |
| SA POWERNET EX Extension Reel 110V c/w 16A STAHL plug, 1 x 16A STAHL socket 25m of braided cable Order Code: PNER110EX/25HRE/STA | 91 |
| SA POWERNET EX Extension Reel 230V c/w 16A ATX plug, 1 x 16A ATX socket 25m of braided cable Order Code: PNER230EX/25HRE/ATX | 91 |
| SA POWERNET EX Extension Reel 230V c/w 16A CEAG plug, 1 x 16A CEAG socket 25m of braided cable Order Code: PNER230EX/25HRE/CEA | 91 |
| SA POWERNET EX Extension Reel 230V c/w 16A STAHL plug, 1 x 16A STAHL socket 25m of braided cable Order Code: PNER230EX/25HRE/STA | 91 |

TO PLACE YOUR ORDER, CALL +44 (0)333 240 6111 ...

... OR EMAIL INFO@SAEQUIP.COM

PRODUCT DIRECTORY

POWER /

EXTENSION LEAD

| | |
|---|----|
| SA POWERNET EX Extension Lead 24V c/w 1 x 16A 2P+E ATX plug, 1 x 16A ATX 2P+E coupler and 20m of braided cable Order Code: PNEL24EX/20HRE/ATX16/2E | 93 |
| SA POWERNET EX Extension Lead 24V c/w 1 x 16A ATX plug, 1 x 16A ATX coupler and 20m of braided cable Order Code: PNEL24EX/20HRE/ATX16/3P | 93 |
| SA POWERNET EX Extension Lead 24V c/w 1 x 16A ATX plug, 1 x 16A ATX coupler and 20m of braided cable (INMETRO) Order Code: PNEL24EX/20HRE/ATX16/3P/BR | 93 |
| SA POWERNET EX Extension Lead 24V c/w 1 x 16A CEAG plug, 1 x 16A CEAG coupler and 20m of braided cable Order Code: PNEL24EX/20HRE/CEA16/3P | 93 |
| SA POWERNET EX Extension Lead 24V c/w 1 x 16A STAHL plug, 1 x 16A STAHL coupler and 20m of braided cable Order Code: PNEL24EX/20HRE/STA16/3P | 93 |
| SA POWERNET EX Extension Lead 42V c/w 1x 16A 3P ATX plug, 1 x 16A ATX coupler and 20m of H07RN-F cable Order Code: PNEL42EX/20H7E/ATX16/3P | 93 |
| SA POWERNET EX Extension Lead 42V c/w 1x 16A 3P CEAG plug, 1 x 16A CEAG coupler and 20m of H07RN-F cable Order Code: PNEL42EX/20H7E/CEA16/3P | 93 |
| SA POWERNET EX Extension Lead 110V c/w 1 x 16A ATX plug, 1 x 16A ATX coupler and 15m of braided cable Order Code: PNEL110EX/15HRE/ATX16/3P | 93 |
| SA POWERNET EX Extension Lead 110V c/w 1 x 16A CEAG plug, 1 x 16A CEAG coupler and 15m of braided cable Order Code: PNEL110EX/15HRE/CEA16/3P | 93 |
| SA POWERNET EX Extension Lead 110V c/w 1 x 16A ATX plug, 1 x 16A ATX coupler and 20m of braided cable Order Code: PNEL110EX/20HRE/ATX16/3P | 93 |
| SA POWERNET EX Extension Lead 110V c/w 1 x 16A CEAG plug, 1 x 16A CEAG coupler and 20m of braided cable Order Code: PNEL110EX/20HRE/CEA16/3P | 93 |

| | |
|--|----|
| SA POWERNET EX Extension Lead 110V c/w 1 x 16A STAHL plug, 1 x 16A STAHL coupler and 20m of braided cable Order Code: PNEL110EX/20HRE/STA16/3P | 93 |
| SA POWERNET EX Extension Lead 110V c/w 1 x 16A ATX plug, 1 x 16A ATX coupler and 25m of braided cable Order Code: PNEL110EX/25HRE/ATX16/3P | 93 |
| SA POWERNET EX Extension Lead 110V c/w 1 x 16A CEAG plug, 1 x 16A CEAG coupler and 25m of braided cable Order Code: PNEL110EX/25HRE/CEA16/3P | 93 |
| SA POWERNET EX Extension Lead 110V c/w 1 x 16A STAHL plug, 1 x 16A STAHL coupler and 25m of braided cable Order Code: PNEL110EX/25HRE/STA16/3P | 93 |
| SA POWERNET EX Extension Lead 230V c/w 1 x 16A ATX plug, 1 x 16A ATX coupler and 15m of braided cable Order Code: PNEL230EX/15HRE/ATX16/3P | 93 |
| SA POWERNET EX Extension Lead 230V c/w 1 x 16A CEAG plug, 1 x 16A CEAG coupler and 15m of braided cable Order Code: PNEL230EX/15HRE/CEA16/3P | 93 |
| SA POWERNET EX Extension Lead 230V c/w 1 x 16A CEAG plug, 1 x 16A CEAG coupler and 15m of braided cable Order Code: PNEL230EX/15HRE/STA16/3P | 93 |
| SA POWERNET EX Extension Lead 230V c/w 1 x 16A ATX plug, 1 x 16A ATX coupler and 20m of braided cable Order Code: PNEL230EX/20HRE/ATX16/3P | 93 |
| SA POWERNET EX Extension Lead 230V c/w 1 x 16A CEAG plug, 1 x 16A CEAG coupler and 20m of braided cable Order Code: PNEL230EX/20HRE/CEA16/3P | 93 |
| SA POWERNET EX Extension Lead 230V c/w 1 x 16A STAHL plug, 1 x 16A STAHL coupler and 20m of braided cable Order Code: PNEL230EX/20HRE/STA16/3P | 93 |
| SA POWERNET EX Extension Lead 230V c/w 1 x 16A ATX plug, 1 x 16A ATX coupler and 25m of braided cable Order Code: PNEL230EX/25HRE/ATX16/3P | 93 |

| | |
|---|----|
| SA POWERNET EX Extension Lead 230V c/w 1 x 16A ATX plug, 1 x 16A ATX coupler and 25m of braided cable Order Code: PNEL230EX/25HRE/ATX16/BR | 93 |
| SA POWERNET EX Extension Lead 230V c/w 1 x 16A CEAG plug, 1 x 16A CEAG coupler and 25m of braided cable Order Code: PNEL230EX/25HRE/CEA16/3P | 93 |
| SA POWERNET EX Extension Lead 230V c/w 1 x 16A STAHL plug, 1 x 16A STAHL coupler and 25m of braided cable Order Code: PNEL230EX/25HRE/STA16/3P | 93 |
| SA POWERNET EX Extension Lead 400V c/w 1 x 16A 4P CEAG plug, 1 x 16A 4P CEAG coupler and 25m of braided cable Order Code: PNEL400EX/25HR/CEA16/4P | 93 |
| SA POWERNET EX Extension Lead 400V c/w 1 x 32A 4P CEAG plug, 1 x 32A 4P CEAG coupler and 25m of braided cable Order Code: PNEL400EX/25HR/CEA32/4P | 93 |
| SA POWERNET EX Extension Lead 400V c/w 1 x 32A 5P CEAG plug, 1 x 32A 5P CEAG coupler and 25m of braided cable Order Code: PNEL400EX/25HR/CEA32/5P | 93 |



NOTES

TO PLACE YOUR ORDER, CALL +44 (0)333 240 6111 ...

... OR EMAIL INFO@SAEQUIP.COM



Head Office (UK)

10 Clifton View
East Mains Industrial Estate
Broxburn
EH52 5NE

T +44 (0)333 240 6111

info@saequip.com

European Office

Oud Camp 22
3155 DL Maasland
The Netherlands

T +31 (0)88 697 2590

saequip.com

Follow us on: [in](#) [f](#) [t](#) [i](#)

PERFORMANCE IN THE EXTREME