

Chalmit[®]

LUNA

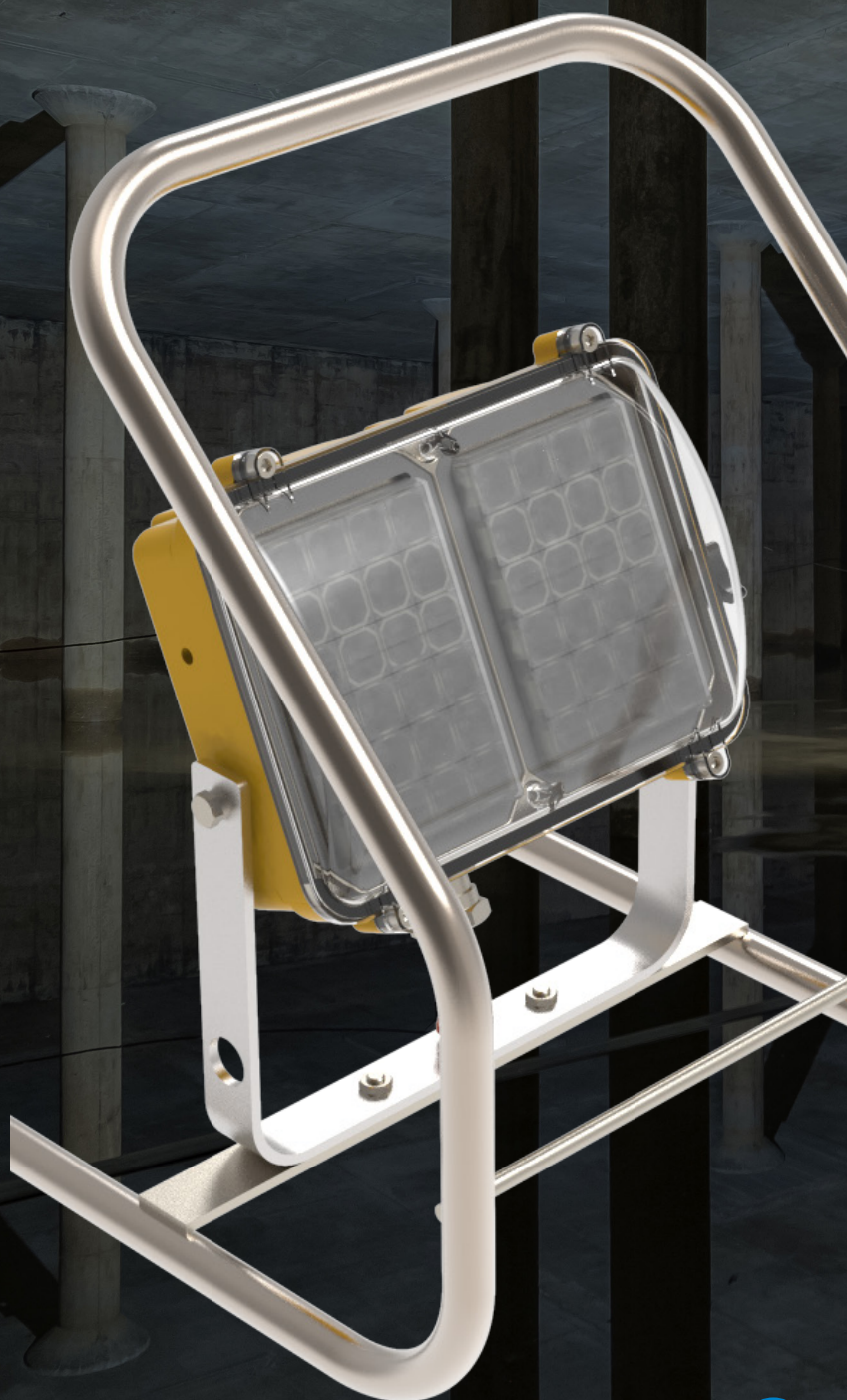
..... Temporary Lighting for Hazardous Areas



www.hubbell.com/chalmit/en/Temporary-EX-LED-Floodlight



LUNA



Reliable. Robust. Powerful.

Easily portable and highly powerful, the **Luna LED** floodlight directs a crisp, white, targeted output (up to 5,600lm) where you need it most.

With a marine grade construction and ambient temperature range of -20°C to +55°C, the ATEX and IECEx certified Luna, can withstand the toughest use in some of the world's most arduous environments.

Discover how the **Luna** can light up your temporary lighting application today.



Features & Benefits

● Certification

The Luna is ATEX & IECEx certified for use in Zones 1 & 2 (gas) and 21 & 22 (dust).

● LED Performance

Market leading LED Life of
L70 >150,000 hours at 25°C
50° beam angle for wide area illumination

● Ingress

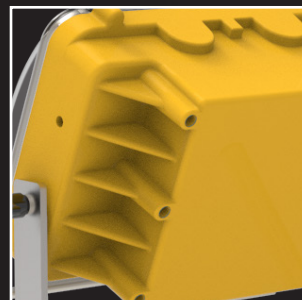
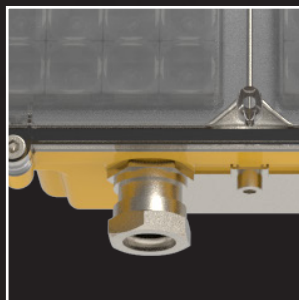
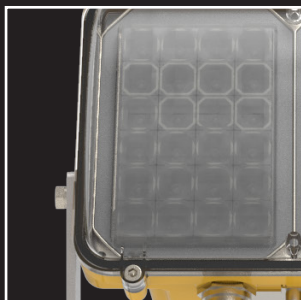
Waterproof & Dustproof (IP66/67)

● Linkable

Link multiple luminaires together
from a single power supply to provide a
greater spread of illumination

● Materials

- Uses proven materials to withstand the toughest environments
- Lightweight (9kg) for easy portability
- IK10 impact tested
- Marine Grade Aluminium Enclosure
- Stainless Steel Frame
- Toughened scratch, impact & chemical resistant diffuser
- Polycarbonate or Flat Glass Available





Lighting. Where you need it.



LUNA LED

HDL106TN Transportable Ex e LED Floodlight

The **Luna** Floodlight is an easily portable, reliable and highly powerful luminaire that directs a crisp, targeted output (up to 5,600lm) where you need it most.

With a robust, marine grade construction, maintenance-friendly design and LED lifespan of over 10 years, the **Luna** is ideal for temporary lighting applications



International Approvals



Standard Specification

HDL106TN Transportable Ex e LED Floodlight

Type of Protection	Ex e mb (Increased Safety, Encapsulation) Ex tb (Dust Protected Enclosure)
ATEX Classification	Group II Category 2 GD
Area Classification	Zone 1 and 21 areas to EN 60079-10-1 and EN 60079-10-2 with installation to EN 60079-14
Certificate	EU Type Examination Certificate Sira 10ATEX5115X IECEX Certificate of Conformity IECEX SIR 10.0055X
Coding	Ex e mb IIC T* Gb Ex tb IIIC T*** °C Db Refer to table for T rating and Ambient
Enclosure	LM6 Aluminium with yellow epoxy powder finish (RAL 1018) and Polycarbonate diffuser
Entry	2 x M20 cable entries
Termination	3 core 4mm ² max. conductor with looping
Installation	Stirrup mounted within transportable frame
Control Gear	Electronic Driver
Optical Distribution	Wide beam (50°)
Colour Temperature (CCT)	5000K (Cool White)
Colour Rendering Index (Ra)	>70
Maintenance	M8 Hex Head and M6 SKT Head
LED Lifetime @ 25°C Ambient	L70 > 150,000hrs
Impact Protection	IK10
Ingress Protection	IP66/67 to EN 60529
Surge Protection	4kV line to line, 6kV line to earth
Electrical Supply	Refer to Ordering Matrix (For details on Transformers or Splitter Boxes, please contact Internal Sales)

Features

- ◆ **Ultra bright light** with market-leading efficacy
- ◆ **9kg Lightweight** transportable floodlight
- ◆ **>150,000 maintenance free hours** at 25°C (L70)
- ◆ Available with **a variety of cable lengths and plugs**
- ◆ **Robust marine grade construction** designed for tough use
- ◆ **Independent LED engines** for ultimate reliability and confidence on site*

*48 LED option only

Std. Cat No.	Delivered Output	Power Consumption	Voltage	Tclass	T °C (Dust)	Ambient °C	Weight
HDL106TN0HWHW006	2812lm	27W	100-254V AC	T4 T3	103	-20 to +50 -20 to +55	9kg
HDL106TN0LWHW006	2812lm	27W	18-54V AC/DC	T4	87	-20 to +55	9kg
HDL106TN1HWHW006	5624lm	53W	100-254V AC	T4 T3	103	-20 to +50 -20 to +55	9kg
HDL106TN1LWHW006	5624lm	53W	18-54V AC/DC	T4	87	-20 to +55	9kg

Options - Suffix to Catalogue No.

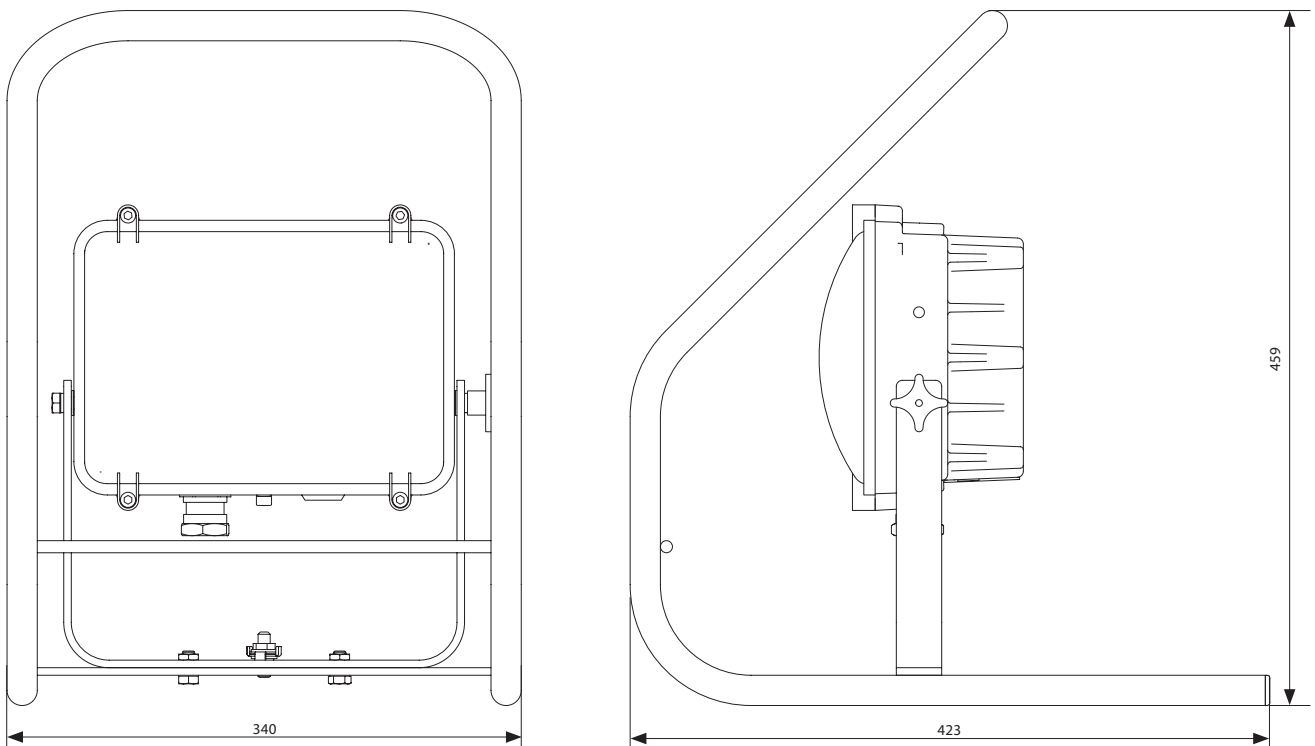
FG	Flat Glass and Aluminium front cover	BP	Nickel plated brass plugs (not available with Linkable version)
-----------	--------------------------------------	-----------	---

HDL106TN CABLING CONFIGURATOR

Plug Manufacturer	Plug - Voltage	Cable Type	Cable - Length	Linkable
C - CEAG	024 - 24V	S - SY armoured	05 - 5m cable	L - Linkable version*
A - ATX	110 - 110V	H - H07RN-F rubber	10 - 10m cable	
	230 - 230V		15 - 15m cable	

Typical ordering reference: **HDL106TN1HWHW006-C230H15**

*Ambient restrictions apply when linking multiple units with CEAG sockets. Please contact Chalmit Technical for further information.





United Kingdom

Chalmit PO Box 5575 Glasgow G52 9AP UK
Tel: +44 (0) 141 882 5555 Email: info@chalmit.com

Middle East

Building No. 5EA Office No. G03
Dubai Airport Free Zone (DAFZ) PO Box 23529 Dubai UAE
Tel: +971 (0)4 609 1222 Email: middle-east@chalmit.com

Asia Pacific

130 Joo Seng Road #03-02 Olivine Building Singapore 368357
Tel: +65 6282 2242 Fax: +65 6284 4244 Email: asia-pacific@chalmit.com

Korea

512 Hyosung Intellian 681-3 Deungchon Dong
Kangseo-Ku Seoul 157-030 Korea
Tel: +82 2 2063 3719 Fax: +82 2 2603 7386
Mob: +82 10 9977 6349 Email: korea@chalmit.com

China

Room H/I 18F No. 728 Pudong Avenue
Shanghai International Ocean and Finance Building Shanghai 200120 P.R. China
Tel: (86 21) 3392 6550 ext. 318 Fax: (86 21) 3392 6551
Mob: +(86 139) 1829 4175 6349 Email: china@chalmit.com